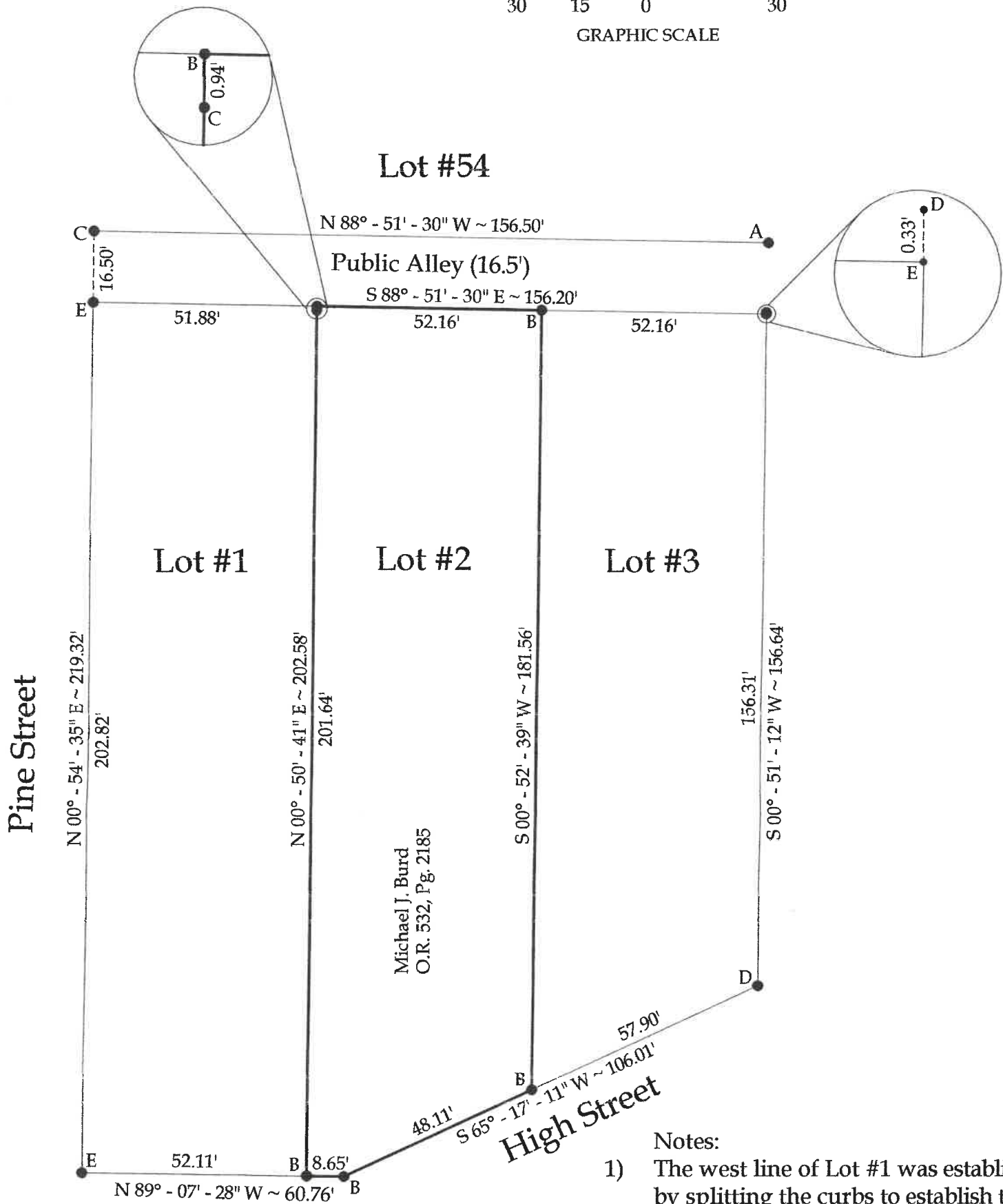
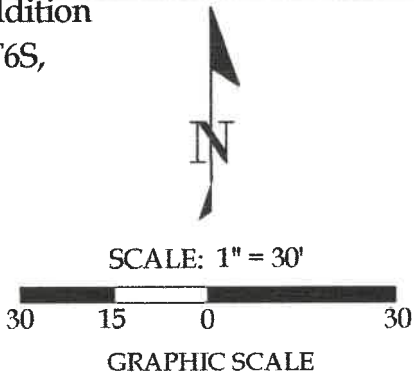


Survey of Parcel #K32-016-003-00, being Lot #2 of Armstrongs East Addition to St. Marys, Ohio (P.B. 1B, Pg 196), located in the NE ¼ of Section 3, T6S, R4E, City of St. Marys, Auglaize County, Ohio.

Prior Deed Referenced in O.R. 532, Pg. 2185.



Legend

- A = Existing #4 Rebar
- B = Set #5 Rebar
- C = Exist. ¾" Pipe
- D = Exist. 1" Pipe
- E = Unmonumented Point of Interest

Basis of Bearings:
The Ohio State Plane North Coordinate System.

Note:
All distances shown are measured unless otherwise noted.

- Notes:
- 1) The west line of Lot #1 was established by splitting the curbs to establish the bearing of the centerline of Pine Street and projecting a line south from the pin at the SW corner of Lot #54 at that bearing for the distance called out on the survey of Lot #55 prepared by Gordon Geeslin, dated May 1978.
 - 2) The south line of Lots #1 and #2 was established based on the same survey referenced in note 1) above.
 - 3) The SE line of Lot #2 was established by splitting the curbs to establish the bearing of the centerline of High Street and projecting a line SW from the pin at the SE corner of Lot #3.



This plat represents an actual boundary survey completed under my direct supervision on April 20, 2024.

[Signature]
Brad J. Core, P.S. #8004

CORE CONSULTING <small>A Division of Materials Testing, Inc.</small>		201 N. Broadway St. Spencerville, OH 45887 Phone/Fax: 419-647-6163	
CLIENT: Mike Burd			
SURVEYED BY: B.J.C.	DATE: 4-20-2024	DRAWN BY: E.J.C.	CHECKED BY: B.J.C.
SCALE: 1" = 30'		PAGE 1 OF 1 PAGES	