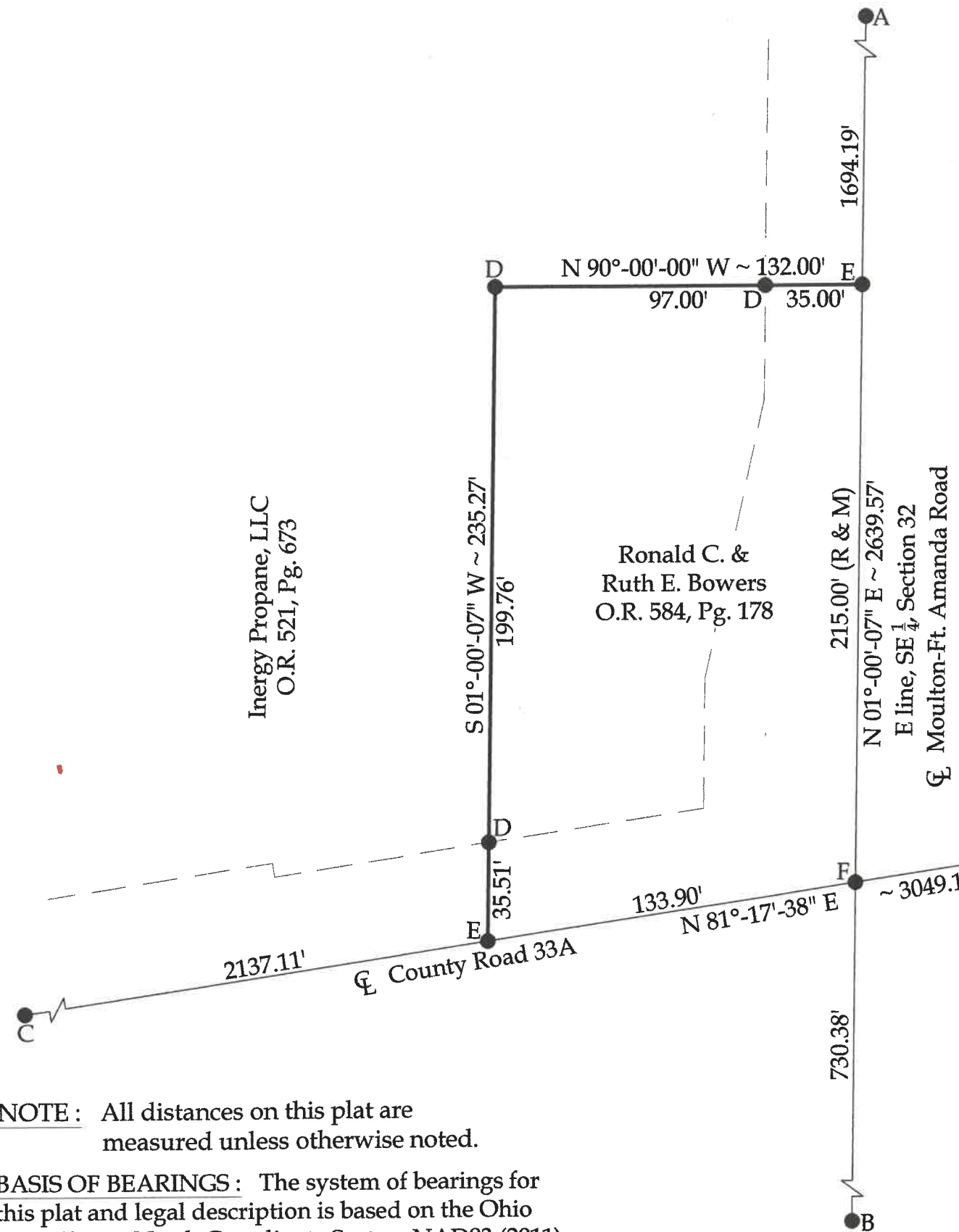
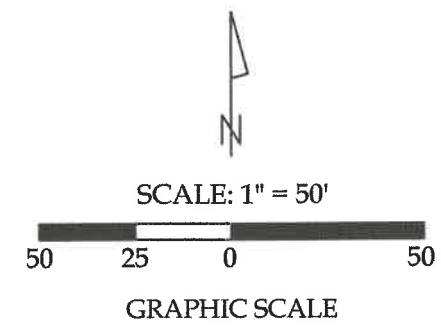


Survey of a part of Parcel #G21-032-031-00 and being a part of the SE 1/4 of Section 32, Town 5 South, Range 5 East, Molton Township, Auglaize County, Ohio.  
(Deeds Referenced in O.R. 521, Pg. 673 & O.R. 584, Pg. 178)



Legend

- A = Existing Monument Box at the NE corner of the SE 1/4 of Section 32
- B = Existing Monument Box at the SE corner of Section 32
- C = Existing Mag Nail
- D = Set #5 Rebar
- E = Set Mag Nail
- F = Set Mag Spike



This plat represents an actual boundary survey completed under my direct supervision on May 19, 2025.

*[Signature]*  
Kyle J. Binkley, P.S. #8587

NOTE : All distances on this plat are measured unless otherwise noted.

BASIS OF BEARINGS : The system of bearings for this plat and legal description is based on the Ohio State Plane - North Coordinate System NAD83 (2011).

This plat is recorded in Survey Book "V", Page 500, in the Auglaize County Engineer's Office.

**Binkley**  
LAND SURVEYING, LLC  
24 W. Auglaize Street  
Wapakoneta, Ohio 45895  
(419) 236-3768

CLIENT: Suburban Propane			
SURVEYED BY: M.A.B./T.E.W.	DATE: 05-19-2025	DRAWN BY: K.J.B.	CHECKED BY: K.J.B.
SCALE: 1" = 50'		PAGE 1	OF PAGES 1