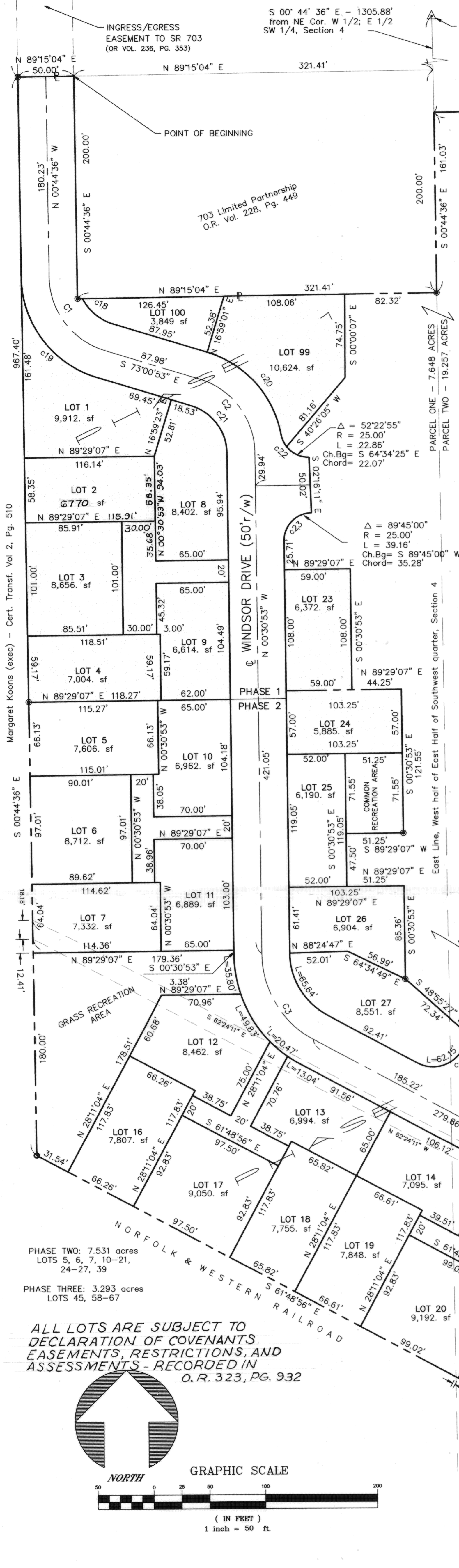


PARK PLACE SUBDIVISION RE-PLAT

(Re-Plat affecting Lots 1, 2, 3, 4, 8, 9, 23, 24, 99 & 100)

PART OF THE
SOUTHWEST QUARTER OF SECTION 4, T-6-S,
R-4-E, ST. MARYS TOWNSHIP, AUGLAIZE COUNTY, OHIO



LEGAL DESCRIPTION

Commencing at the northeast corner of the west half of the east half of the south-west quarter of Section 4, T-6-S, R-4-E, St. Marys Township, Auglaize County, Ohio and more particularly described as follows:

thence, S 00° 44' 36" E for a distance of 1305.88 feet to a point; thence, S 89° 15' 04" W for a distance of 321.41 feet to the POINT OF BEGINNING;

thence, S 00° 44' 36" E for a distance of 200.00 feet to a 5/8" re-rod w/cap (found);

thence, N 89° 15' 04" E for a distance of 234.09 feet to a point;

thence, S 00° 00' 07" E for a distance of 80.55 feet to a point;

thence, S 02° 26' 05" W for a distance of 73.45 feet to a point of curve;

thence, along said curve which is concave to the north, having a radius of 25.00 feet, a central angle of 52° 22' 55", a chord which bears S 64° 34' 25" E and measures 22.07 feet, for a total arc length of 22.86 feet to a point;

thence, S 02° 16' 11" E for a distance of 50.02 feet to a point of curve;

thence, along said curve which is concave to the southeast, having a radius of 25.00 feet, a central angle of 89° 45' 00" and a chord which bears S 44° 21' 37" W and measures 35.28 feet, for a total arc length of 39.16 feet to a point;

thence, S 00° 30' 53" E for a distance of 25.71 feet to a point;

thence, N 89° 29' 07" E for a distance of 52.00 feet to a point;

thence, S 00° 30' 53" E for a distance of 115.00 feet to a 5/8" re-rod w/cap (found);

thence, N 89° 29' 07" E for a distance of 51.25 feet to a point;

thence, S 00° 30' 53" E for a distance of 121.55 feet to a 5/8" re-rod w/cap (found);

thence, S 89° 29' 07" W for a distance of 51.25 feet to a point;

thence, S 00° 30' 53" E for a distance of 47.50 feet to a point;

thence, N 89° 29' 07" E for a distance of 51.25 feet to a point;

thence, S 00° 30' 53" E for a distance of 85.36 feet to a 5/8" re-rod w/cap (found);

thence, S 48° 55' 27" E for a distance of 72.34 feet to a point;

thence, N 89° 29' 07" E for a distance of 50.00 feet to a point;

thence, S 00° 30' 53" E for a distance of 39.16 feet to a point;

thence, N 89° 29' 07" E for a distance of 54.00 feet to a point;

thence, N 00° 30' 53" W for a distance of 117.41 feet to a 5/8" re-rod w/cap (found);

thence, N 89° 29' 07" E for a distance of 50.92 feet to a point;

thence, S 00° 30' 53" E for a distance of 59.89 feet to a point;

thence, N 89° 29' 07" E for a distance of 102.43 feet to a point;

thence, N 00° 30' 53" W for a distance of 4.59 feet to a point of curve;

thence, along said tangent curve which is concave to the southeast, having a radius of 30.00 feet, a central angle of 89° 45' 00", a chord which bears N 44° 22' 04" E and measures 42.34 feet, for a total arc length of 47.00 feet to a point;

thence, N 89° 15' 00" E for a distance of 20.96 feet to a 5/8" re-rod w/cap (found);

thence, S 00° 30' 53" E for a distance of 59.00 feet to a 5/8" re-rod w/cap (found);

thence, N 89° 15' 00" E for a distance of 338.97 feet to a 5/8" re-rod w/cap (found);

thence, S 00° 30' 55" E for a distance of 473.54 feet to a 5/8" re-rod w/cap (found);

thence, S 88° 40' 00" W for a distance of 342.24 feet to a 5/8" re-rod w/cap (found);

thence, N 61° 48' 56" W along the northerly right-of-way line of the Norfolk & Western Railway, for a distance of 787.69 feet to a 5/8" re-rod w/cap (found);

thence, N 00° 44' 36" W for a distance of 967.40 feet to a 5/8" re-rod w/cap (found);

thence, N 89° 15' 04" E for a distance of 50.00 feet to the POINT OF BEGINNING, containing therein 13.268 acres.

This plat is subject to and shall receive the benefit of a general utility easement which has been granted to The City of St. Marys, West Ohio Gas Company, General Telephone Company and Warner Cable Company as well as evidenced by Official Record Volume 236, Page 353.

This plat is subject to restrictions found in the Declaration of Covenants, Easements, Restrictions and Assessment Lien Recorded in Volume 323, Page(s) 232, of the official records of Auglaize County, Ohio.

We hereby consent to the Dedication of this plat as evidenced by the signature of Donna J. V.P. our duly authorized officer.

DEDICATION

IN WITNESS WHEREOF, PARK PLACE LIMITED PARTNERSHIP, the Dedicator, by THE BRAHMA GROUP, INC., an Ohio corporation, its general partner has by NORTON M. FRANK, JR., its President, thereto duly authorized by resolution of its board of directors, hereby accepts this plat of Phase 1 & 2 as depicted.

In witness thereof 29 day of November 1998

WITNESS: Cindy Sawmiller PARK PLACE LIMITED PARTNERSHIP, by Norton M. Frank, Jr. its General Partner

ACKNOWLEDGEMENT

STATE OF OHIO
COUNTY OF AUGLAIZE

BE IT REMEMBERED, that on this 28 day of November, 1998, before me, a Notary Public in and for said state, personally came PARK PLACE LIMITED PARTNERSHIP the owner of the heron plat by THE BRAHMA GROUP, INC., an Ohio corporation, its general partner, by NORTON M. FRANK, JR., its President, who acknowledged the signing thereof to be his voluntary act and deed as such officer and deed of said corporation pursuant to authority of its Board of Directors and the voluntary act and deed of PARK PLACE LIMITED PARTNERSHIP.

IN TESTIMONY WHEREOF, I have hereunto subscribed my name and affixed my seal on this 28 day of November, 1998.

Notary Public

Amy L. Luth

Notary Public, State of Ohio
My Commission Expires Oct. 21, 2007

APPROVAL AND ACCEPTANCE

IN WITNESS WHEREOF, the undersigned owners of land within the heron re-plat do hereby accept and approve said re-plat for the uses and purposes herein designated.

In witness thereof 28 day of November 1998

WITNESS:

Cindy Sawmiller
Amy Luth
Cindy Sawmiller
Amy Luth
Cindy Sawmiller
Amy Luth
Cindy Sawmiller
Amy Luth

OWNERS:

Kathryn L. Danaher
Kathryn L. Danaher
Anthony Wright
Anthony Wright
Patrick Delinger
Patrick Delinger
Lorna Delinger
Lorna Delinger

STATE OF OHIO
COUNTY OF AUGLAIZE

ACKNOWLEDGEMENT

BE IT REMEMBERED, that on this 28 day of November, 1998, before me, a Notary Public in and for said state, personally came the above signed owners who acknowledged the signing of this re-plat to be their voluntary act and deed.

IN TESTIMONY WHEREOF, I have hereunto subscribed my name and affixed my seal on this 28 day of November, 1998.

Notary Public

Amy L. Luth

Notary Public, State of Ohio
My Commission Expires Oct. 21, 2007

PLANNING COMMISSION APPROVAL

The Planning Commission of the City of St. Marys hereby certifies that PHASE 1 & 2 of the heron plat was approved by said Commission on the 4 day of December, 1998.

Michael Weadock, Secretary

AUDITOR'S CERTIFICATE

This plat was filed for transfer this 28 day of November, 1998.

Fee: 116.00

Karen Schumann, County Auditor

RECORDER'S CERTIFICATE

Number: 116.00

Filed for record in the Auglaize County Recorder's Office on this 28 day of November, 1998 at 4:00 p.m., and recorded in Plat Cabinet 124 Page 124

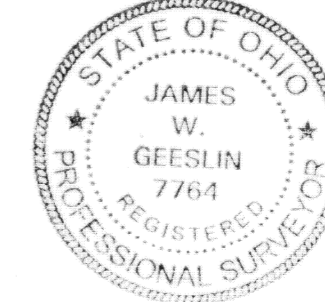
Ann Billings, County Recorder

NOTE: ALL STREETS IN THE PARK PLACE
SUBDIVISION ARE PRIVATE OWNERSHIP
AND ARE NOT PUBLIC STREETS.

LEGEND

- = 5/8" X 30" Iron Bar (set)
- = Iron pin (found)

● DENOTES PHASE 3



James W. Geeslin
JAMES W. GEESLIN, PS 7764

07-09-95 - DWG #95-167rev.
11/20/98 - DWG #95-167rev.

GEESLIN SURVEYING
810 E. Market Street
Celina, OH 45822
(419) 586-6155