

SURVEY REFERENCE

PLAT OF BUNKER HILL THIRD ADDITION
BY R.T. MOTE, 7-30-97, 1C1718

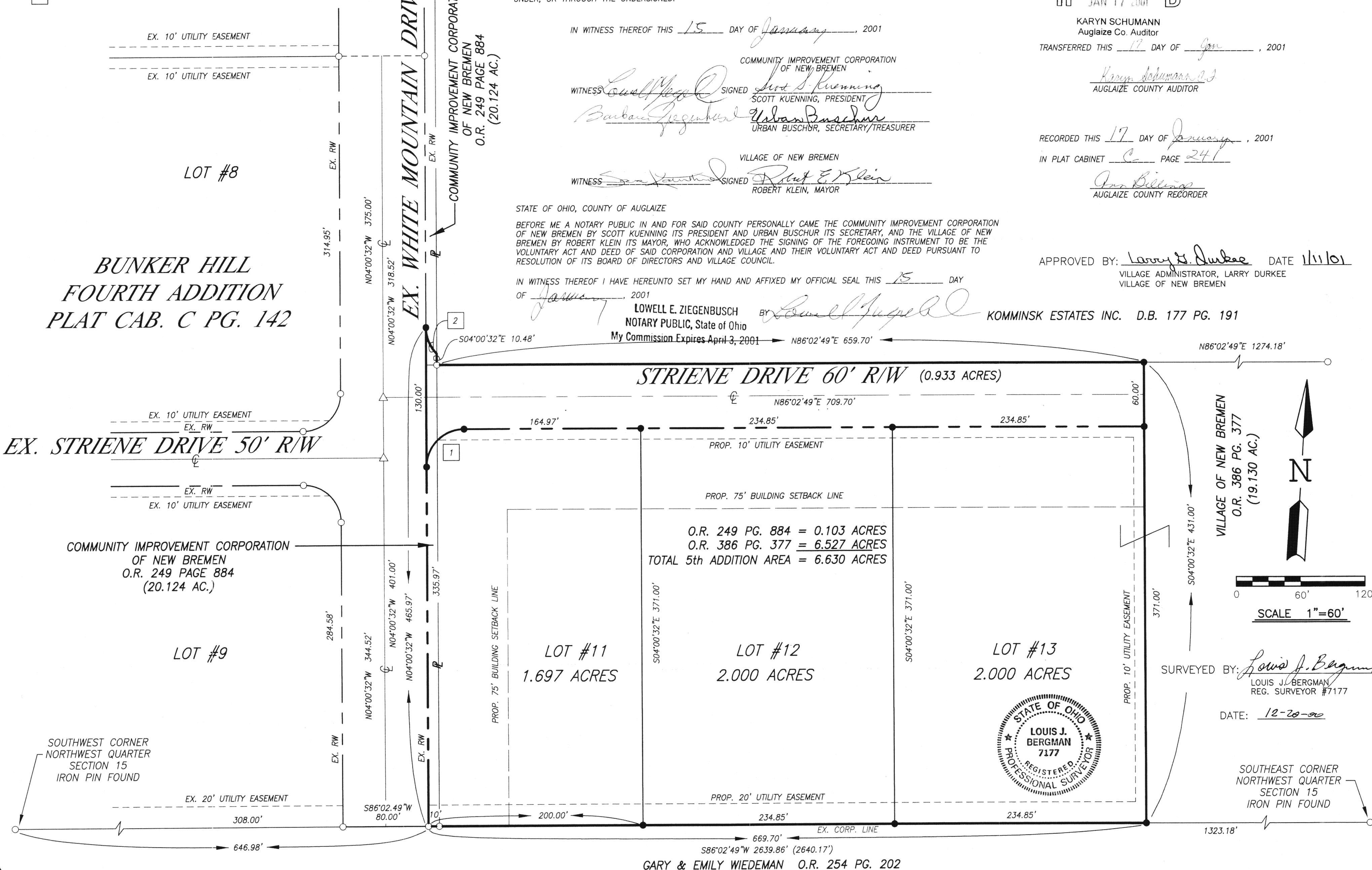
PLAT OF BUNKER HILL FOURTH ADDITION
BY R.T. MOTE, 10-2-97, 1C1728

SURVEY OF A 19.130 ACRE TRACT
BY BERGMAN, 12-10-99, 1C1899

LEGEND

- IRON PIN SET
- IRON PIN FOUND
- () CALLED DIMENSION

CURVE DATA	RADIUS	CENTRAL ANGLE	ARC	CHORD
1	35.00'	90°03'21"	55.01'	N41°01'09"E 49.52'
2	35.00'	44°24'42"	27.13'	S26°12'53"E 26.46'



BUNKER HILL - FIFTH ADDITION

15 SECTION 7-S TOWNSHIP 4-E RANGE

GERMAN TOWNSHIP AUGLAIZE COUNTY OHIO STATE

RECEIVED
JAN 17 2001

KARYN SCHUMANN
Auglaize Co. Auditor
TRANSFERRED THIS 17 DAY OF Jan, 2001

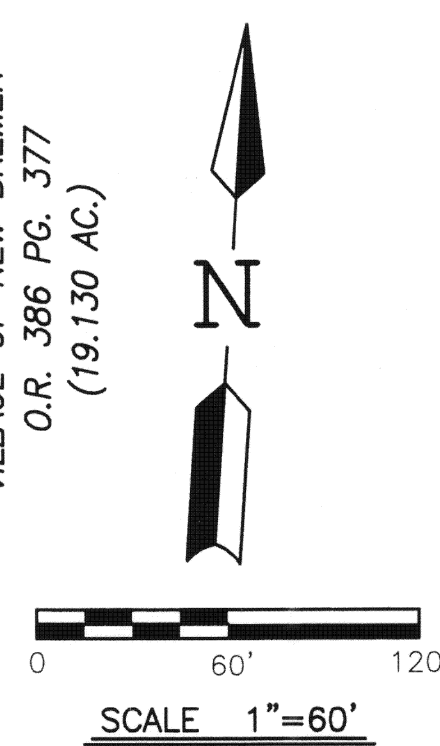
Karyn Schumann
AUGLAIZE COUNTY AUDITOR

RECORDED THIS 17 DAY OF January, 2001
IN PLAT CABINET C PAGE 241

JAN BILLINGS
AUGLAIZE COUNTY RECORDER

APPROVED BY: Larry D. Durkee DATE 1/11/01
VILLAGE ADMINISTRATOR, LARRY DURKEE
VILLAGE OF NEW BREMEN

COMMINSK ESTATES INC. D.B. 177 PG. 191



MOTE & ASSOCIATES, INC.
CIVIL ENGINEERS - LAND SURVEYORS

PHONE: (937) 548-7511
FAX: (937) 548-7464

214 WEST 4th STREET
GREENVILLE, OHIO 45331

**BUNKER HILL - FIFTH ADDITION
VILLAGE OF NEW BREMEN**

NEW BREMEN

REVISIONS:

DATE: 12-20-00

DRAWN: L.J.B.

CHECKED: R.T.M.

JOB NO.
NBRE960896

DRAWING NO.
1C1956