

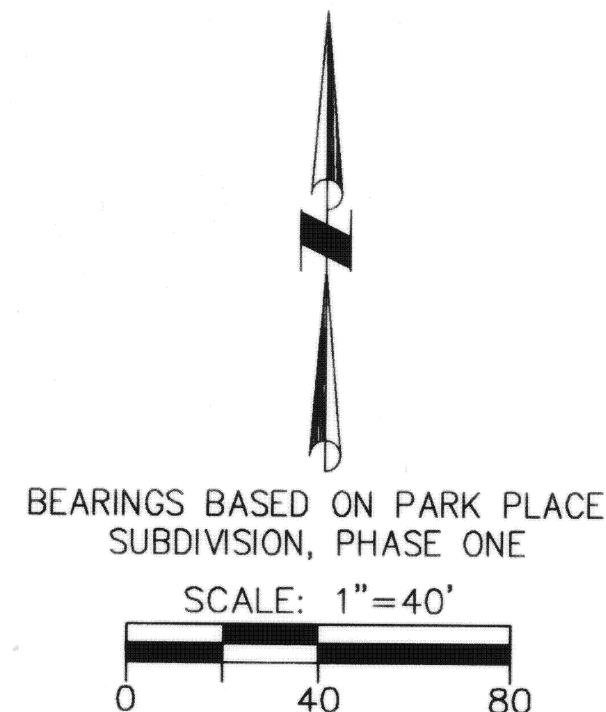
# PARK PLACE SUBDIVISION, PHASE THREE

BEING A REPLAT OF PART OF LOTS 133 'G' - 137 'G',  
SEC. 35, T 7 S, R 4 E, VILLAGE OF MINSTER, JACKSON TWP., AUGLAIZE CO., OHIO

TRANSFERRED AND NUMBERED THIS 16 DAY OF October, 2003  
OCT 16 2003  
KARYN SCHUMANN  
Auglaize Co. Auditor  
AUGLAIZE COUNTY AUDITOR  
FILED THIS 16 DAY OF October, 2003 AT 11:40 O'CLOCK A.M.  
RECORDED THIS 16 DAY OF October, 2003  
PLAT CABINET C, SLIDE 329

Don Billing  
AUGLAIZE COUNTY RECORDER

SECOND  
STREET



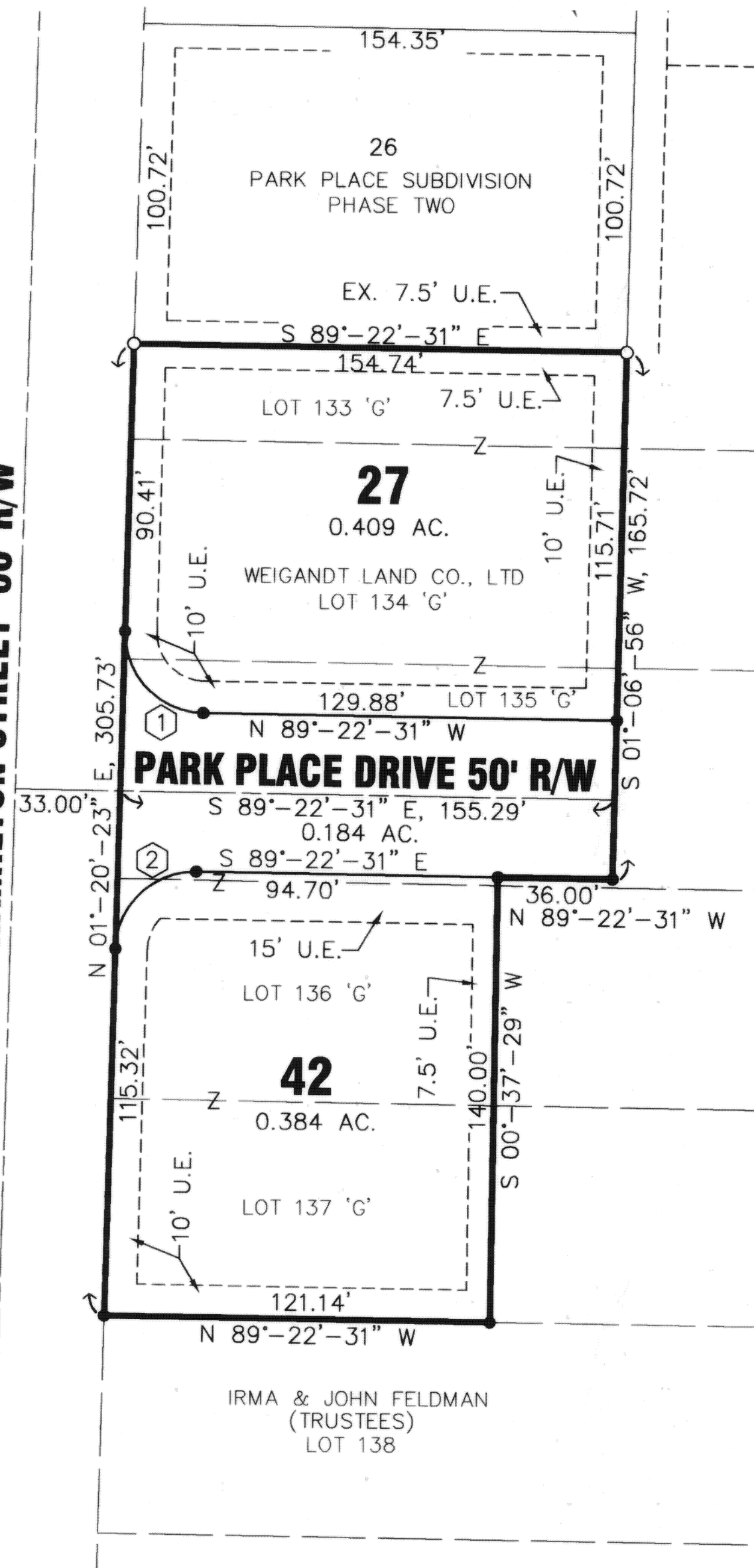
## LEGEND

- 5/8" X 30" REBAR  
W/CAP TO BE SET
- IRON PIN FOUND

OWNER: WEIGANDT LAND CO. LTD.  
O.R. 413, PAGE 209

ACREAGE IN LOTS = 0.793 AC.  
STREET R/W = 0.184 AC.  
TOTAL ACREAGE = 0.977 AC.

HAMILTON STREET 66' R/W



## PLAT AUTHORIZATION AND DEDICATION

Richard L. Weigandt, President, and Todd Weigandt, Vice President, of Weigandt Land Company, LTD., the owners of the land included within this plat have caused the area located in the Village of Minster, Ohio encompassed by this plat, to be surveyed, platted, and known as Park Place Subdivision, Phase Three. Furthermore, Richard L. Weigandt, as President, and Todd Weigandt, as Vice President, for Weigandt Land Company, LTD. dedicate the street and easements as shown on this plat to the public use forever.

Richard L. Weigandt  
Richard L. Weigandt, President  
Weigandt Land Company, LTD.

Todd Weigandt  
Todd Weigandt, Vice President  
Weigandt Land Company, LTD.

State of Ohio  
County of Shelby

The foregoing instrument was acknowledged before me this 16<sup>th</sup> day of October, 2003, by Richard L. Weigandt, as President, and Todd Weigandt, as Vice President, for Weigandt Land Company LTD.

Cindy A. Naseman  
Notary Public

CINDY NASEMAN  
THE STATE OF OHIO  
MARCH 19, 2005

## COVENANTS AND RESTRICTIONS

THE COVENANTS AND RESTRICTIONS FOR PARK PLACE SUBDIVISION ARE RECORDED IN O.R. VOL. 430, PG. 108

## MINSTER PLANNING COMMISSION

THIS PLAT WAS INSPECTED AND APPROVED BY US THIS 15<sup>th</sup> DAY OF OCTOBER, 2003

Donald L. [Signature]  
CHAIRPERSON

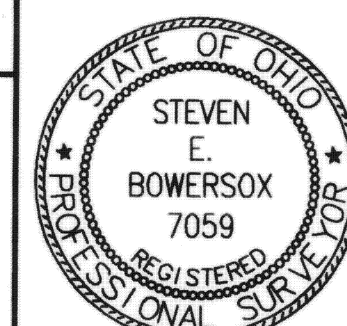
SHEET 1 OF 1

CURVE TABLE					
CURVE NUMBER	RADIUS	$\Delta$	ARC LENGTH	CHORD LENGTH	CHORD BEARING
1	25.00'	90°-42'-54"	39.58'	35.58'	N 44°-01'-04" W
2	25.00'	89°-17'-06"	38.96'	35.13'	N 45°-58'-56" E

A 5/8"x 30" REBAR WITH CAP TO BE SET AT ALL LOT CORNERS AFTER CONSTRUCTION OF STREETS AND UTILITIES.

Steven E. Bowersox  
STEVEN E. BOWERSOX, P.S. #7059

10-09-2003  
DATE



**CHOICE ONE ENGINEERING**  
the choice that exceeds...  
440 E. HOEWISHER ROAD  
SIDNEY, OHIO 45365  
(937) 497-0200 • FAX (937) 497-0300  
www.choiceoneengineering.com

date: 10-09-2003  
drawn by: seb  
job number: AugMin0312Fin