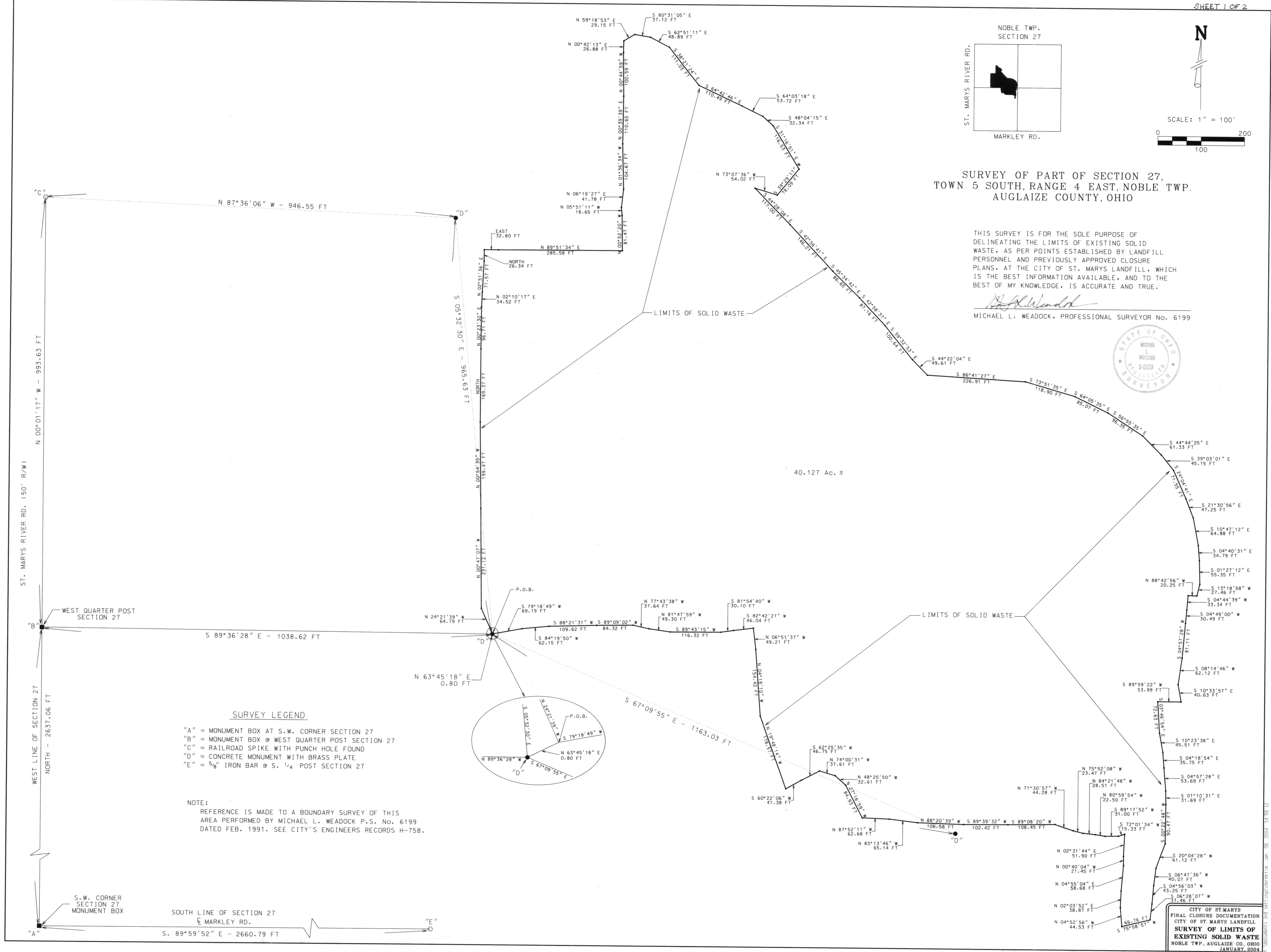
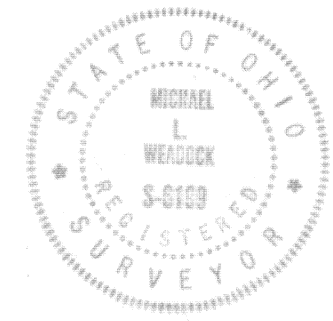


SURVEY OF PART OF SECTION 27,
TOWN 5 SOUTH, RANGE 4 EAST, NOBLE TWP.,
AUGLAIZE COUNTY, OHIO

THIS SURVEY IS FOR THE SOLE PURPOSE OF
DELINEATING THE LIMITS OF EXISTING SOLID
WASTE, AS PER POINTS ESTABLISHED BY LANDFILL
PERSONNEL AND PREVIOUSLY APPROVED CLOSURE
PLANS, AT THE CITY OF ST. MARYS LANDFILL, WHICH
IS THE BEST INFORMATION AVAILABLE, AND TO THE
BEST OF MY KNOWLEDGE, IS ACCURATE AND TRUE.

Michael L. Weadock
MICHAEL L. WEADOCK, PROFESSIONAL SURVEYOR No. 6199



LEGAL DESCRIPTION
for the
Limits of Solid Waste at the City of St. Marys Landfill
Auglaize County, Ohio

Being a part of Section 27, Town 5 South, Range 4 East, Noble Township, Auglaize County, Ohio,
and being more particularly described as follows:


Commencing for reference at a monument box found at the West Quarter post of said Section 27,
thence South 89°36'28" East, a distance of One Thousand Thirty-Eight and 62/100 (1,038.62)
feet to a concrete monument found:

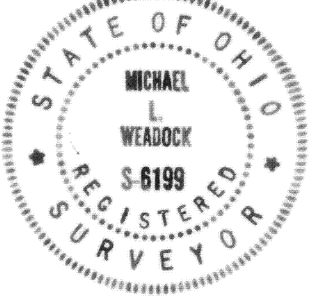
Thence, North 63°45'18" East, a distance of Zero and 80/100 (0.80) feet to the place of beginning:
Thence, North 24°21'39" West, a distance of sixty-four and 79/100 (64.79) feet to a point:
Thence, North 00°47'07" West, a distance of Two Hundred Thirty-One and 12/100 (231.12) feet to a point:
Thence, North 00°54'35" West, a distance of One Hundred Ninety-Nine and 47/100 (199.47) feet to a point:
Thence, North, a distance of One Hundred Sixty-Nine and 37/100 (169.37) feet to a point:
Thence, North 00°23'30" East, a distance of Ninety-Six and 71/100 (96.71) feet to a point:
Thence, North 02°10'17" East, a distance of Thirty-Four and 52/100 (34.52) feet to a point:
Thence, North 02°51'36" East, a distance of Seventy-One and 57/100 (71.57) feet to a point:
Thence, North, a distance of Twenty-Six and 34/100 (26.34) feet to a point:
Thence, East, a distance of Thirty-Two and 80/100 (32.80) feet to a point:
Thence, North 89°51'34" East, a distance of Two Hundred Eighty-Five and 58/100 (285.58) feet to a point:
Thence, North 00°52'20" West, a distance of Eighty-One and 47/100 (81.47) feet to a point:
Thence, North 05°51'11" West, a distance of Eighteen and 65/100 (18.65) feet to a point:
Thence, North 06°19'27" East, a distance of Forty-One and 78/100 (41.78) feet to a point:
Thence, North 01°36'34" West, a distance of One Hundred Four and 67/100 (104.67) feet to a point:
Thence, North 00°39'39" East, a distance of One Hundred Ten and 65/100 (110.65) feet to a point:
Thence, North 00°44'59" West, a distance of One Hundred and 59/100 (100.59) feet to a point:
Thence, North 00°42'13" East, a distance of Twenty-Six and 88/100 (26.88) feet to a point:
Thence, North 59°18'53" East, a distance of Twenty-Nine and 15/100 (29.15) feet to a point:
Thence, South 80°31'05" East, a distance of Thirty-Seven and 12/100 (37.12) feet to a point:
Thence, South 62°51'11" East, a distance of Forty-Eight and 89/100 (48.89) feet to a point:
Thence, South 38°21'24" East, a distance of One Hundred Eleven and 03/100 (111.03) feet to a point:
Thence, South 64°42'46" East, a distance of One Hundred Ten and 49/100 (110.49) feet to a point:
Thence, South 64°03'18" East, a distance of Fifty-Three and 72/100 (53.72) feet to a point:
Thence, South 48°04'15" East, a distance of Thirty-Two and 34/100 (32.34) feet to a point:
Thence, South 31°16'51" East, a distance of One Hundred Sixteen and 53/100 (116.53) feet to a point:
Thence, South 39°29'17" West, a distance of Seventy-Eight and 09/100 (78.09) feet to a point:
Thence, North 73°07'36" West, a distance of Fifty-Four and 02/100 (54.02) feet to a point:
Thence, South 44°28'08" East, a distance of One Hundred Seventeen and 00/100 (117.00) feet to a point:
Thence, South 42°56'41" East, a distance of One Hundred Forty-Six and 21/100 (146.21) feet to a point:
Thence, South 45°34'42" East, a distance of Eighty-Six and 65/100 (86.65) feet to a point:
Thence, South 42°58'37" East, a distance of Eighty-Seven and 16/100 (87.16) feet to a point:
Thence, South 39°32'53" East, a distance of One Hundred and 64/100 (100.64) feet to a point:
Thence, South 44°22'04" East, a distance of Forty-Nine and 61/100 (49.61) feet to a point:
Thence, South 86°41'27" East, a distance of Two Hundred Twenty-Six and 91/100 (226.91) feet to a point:
Thence, South 73°51'35" East, a distance of One Hundred Eighteen and 90/100 (118.90) feet to a point:
Thence, South 64°05'35" East, a distance of Eighty-Five and 07/100 (85.07) feet to a point:
Thence, South 56°55'35" East, a distance of Ninety-Six and 35/100 (96.35) feet to a point:
Thence, South 44°44'25" East, a distance of Sixty-One and 33/100 (61.33) feet to a point:
Thence, South 39°03'01" East, a distance of Forty-Five and 15/100 (45.15) feet to a point:
Thence, South 24°04'41" East, a distance of Seventy-One and 55/100 (71.55) feet to a point:
Thence, South 21°30'56" East, a distance of Forty-Seven and 25/100 (47.25) feet to a point:
Thence, South 10°47'12" East, a distance of Sixty-Four and 88/100 (64.88) feet to a point:
Thence, South 04°40'31" East, a distance of Thirty-Four and 79/100 (34.79) feet to a point:
Thence, South 01°27'12" East, a distance of Fifty-Five and 35/100 (55.35) feet to a point:
Thence, South 13°18'58" West, a distance of Twenty-Seven and 46/100 (27.46) feet to a point:
Thence, North 88°42'56" West, a distance of Twenty and 25/100 (20.25) feet to a point:
Thence, South 04°44'39" West, a distance of Thirty-Three and 34/100 (33.34) feet to a point:
Thence, South 04°49'00" West, a distance of Thirty and 49/100 (30.49) feet to a point:
Thence, South 04°57'28" West, a distance of Eighty-One and 11/100 (81.11) feet to a point:

Thence, South 08°14'46" West, a distance of Sixty-Two and 12/100 (62.12) feet to a point:
Thence, South 10°33'57" East, a distance of Forty and 63/100 (40.63) feet to a point:
Thence, South 89°59'22" West, a distance of Fifty-Three and 99/100 (53.99) feet to a point:
Thence, South 03°46'54" East, a distance of Seventy-Two and 63/100 (72.63) feet to a point:
Thence, South 10°23'38" East, a distance of Forty-Five and 51/100 (45.51) feet to a point:
Thence, South 04°18'54" East, a distance of Thirty-Five and 75/100 (35.75) feet to a point:
Thence, South 04°57'28" East, a distance of Fifty-Three and 69/100 (53.69) feet to a point:
Thence, South 01°10'31" East, a distance of Thirty-One and 69/100 (31.69) feet to a point:
Thence, South 00°22'48" West, a distance of Ninety and 47/100 (90.47) feet to a point:
Thence, South 20°04'28" West, a distance of Sixty-One and 12/100 (61.12) feet to a point:
Thence, South 06°47'36" West, a distance of Forty and 07/100 (40.07) feet to a point:
Thence, South 04°56'03" West, a distance of Forty-Three and 25/100 (43.25) feet to a point:
Thence, South 06°28'07" West, a distance of Thirty-Seven and 46/100 (37.46) feet to a point:
Thence, South 75°58'57" West, a distance of Sixty-Six and 76/100 (66.76) feet to a point:
Thence, North 04°52'56" West, a distance of Forty-Four and 53/100 (44.53) feet to a point:
Thence, North 02°03'52" East, a distance of Thirty-Eight and 87/100 (38.87) feet to a point:
Thence, North 04°55'04" East, a distance of Fifty-Eight and 68/100 (58.68) feet to a point:
Thence, North 00°40'04" West, a distance of Twenty-One and 45/100 (21.45) feet to a point:
Thence, North 02°31'44" East, a distance of Fifty-One and 90/100 (51.90) feet to a point:
Thence, South 72°01'34" West, a distance of Fifteen and 33/100 (15.33) feet to a point:
Thence, South 89°17'52" West, a distance of Thirty-One and 00/100 (31.00) feet to a point:
Thence, North 80°59'54" West, a distance of Twenty-Two and 50/100 (22.50) feet to a point:
Thence, North 84°21'48" West, a distance of Twenty-Eight and 51/100 (28.51) feet to a point:
Thence, North 75°52'08" West, a distance of Twenty-Three and 47/100 (23.47) feet to a point:
Thence, North 71°30'57" West, a distance of Forty-Four and 28/100 (44.28) feet to a point:
Thence, South 89°08'20" West, a distance of One Hundred Eight and 45/100 (108.45) feet to a point:
Thence, South 89°39'32" West, a distance of One Hundred Two and 42/100 (102.42) feet to a point:
Thence, North 88°20'39" West, a distance of One Hundred Six and 58/100 (106.58) feet to a point:
Thence, North 83°13'46" West, a distance of Sixty-Five and 14/100 (65.14) feet to a point:
Thence, North 87°52'11" West, a distance of Sixty-Two and 68/100 (62.68) feet to a point:
Thence, North 27°16'59" West, a distance of Eighty-Four and 93/100 (84.93) feet to a point:
Thence, North 48°25'50" West, a distance of Thirty-Two and 61/100 (32.61) feet to a point:
Thence, North 74°00'31" West, a distance of Thirty-Seven and 61/100 (37.61) feet to a point:
Thence, South 62°25'35" West, a distance of Forty-Six and 75/100 (46.75) feet to a point:
Thence, South 60°22'06" West, a distance of Forty-One and 38/100 (41.38) feet to a point:
Thence, North 19°48'14" West, a distance of One Hundred Seventy-Eight and 57/100 (178.57) feet to a point:
Thence, North 04°19'10" West, a distance of One Hundred Fifty-Four and 42/100 (154.42) feet to a point:
Thence, North 06°51'37" West, a distance of Forty-Nine and 21/100 (49.21) feet to a point:
Thence, South 82°42'27" West, a distance of Forty-Six and 04/100 (46.04) feet to a point:
Thence, South 81°54'40" West, a distance of Thirty and 10/00 (30.10) feet to a point:
Thence, South 89°43'15" West, a distance of One Hundred Sixteen and 32/100 (116.32) feet to a point:
Thence, North 81°47'59" West, a distance of Forty-Nine and 30/100 (49.30) feet to a point:
Thence, North 77°43'38" West, a distance of Thirty-Seven and 64/100 (37.64) feet to a point:
Thence, South 89°09'02" West, a distance of Eighty-Four and 32/100 (84.32) feet to a point:
Thence, South 88°21'31" West, a distance of One Hundred Nine and 62/100 (109.62) feet to a point:
Thence, South 84°19'50" West, a distance of Sixty-Two and 15/100 (62.15) feet to a point:
Thence, South 79°18'49" West, a distance of Sixty-Nine and 19/100 (69.19) feet to the place of beginning.

Said parcel contains 40.127 acres, more or less.

Reference is made to a boundary survey of this area conducted by Michael L. Weadock,
Professional Surveyor No. 6199, dated February 1991.


Michael L. Weadock
Professional Surveyor NO. 6199

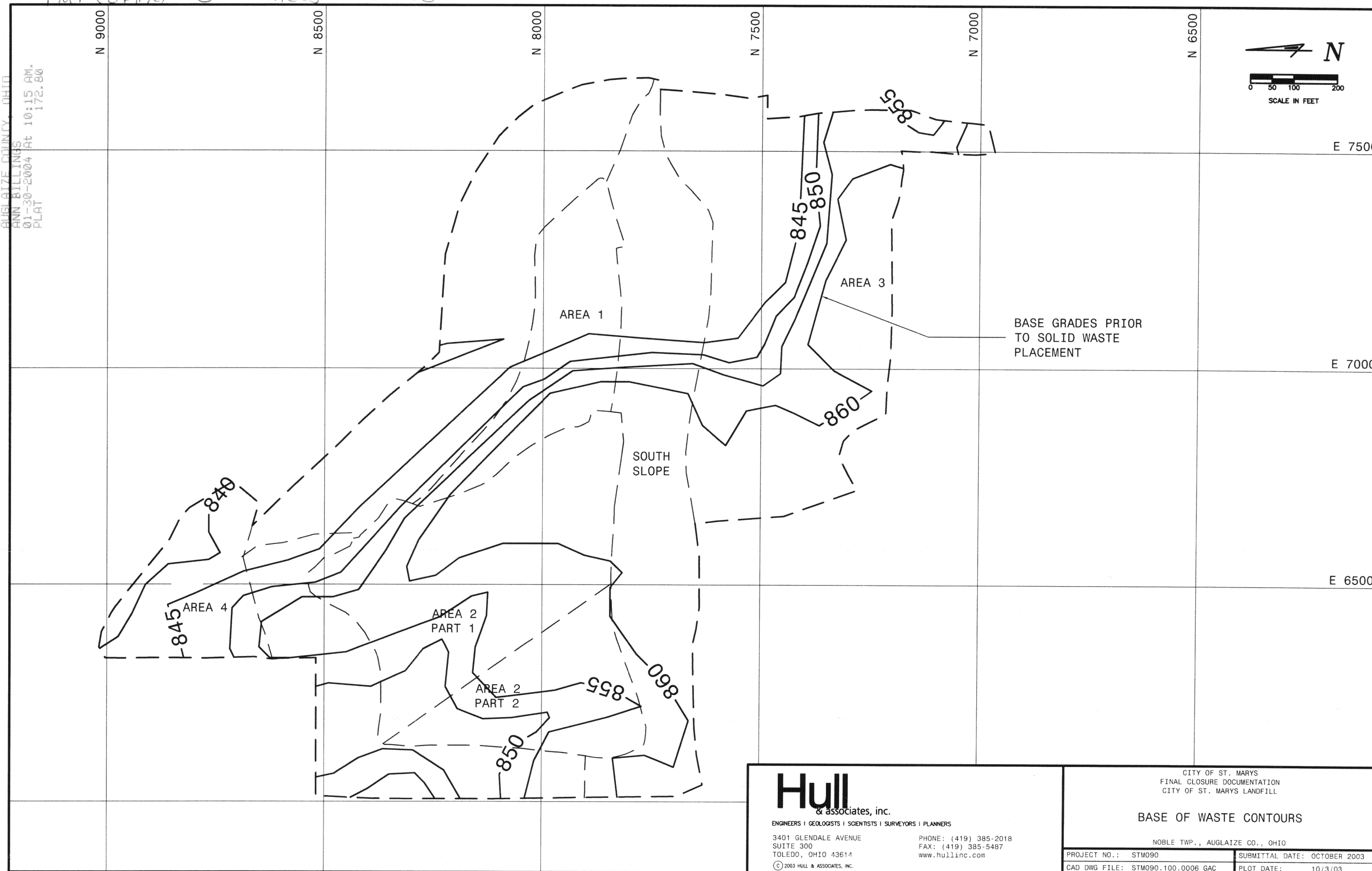


Instrument
200400000795

200400000795
Filed for Record in
AUGLAIZE COUNTY, OHIO
ANN BILLINGS
01-30-2004 at 10:15 AM.
PLAT 172.80

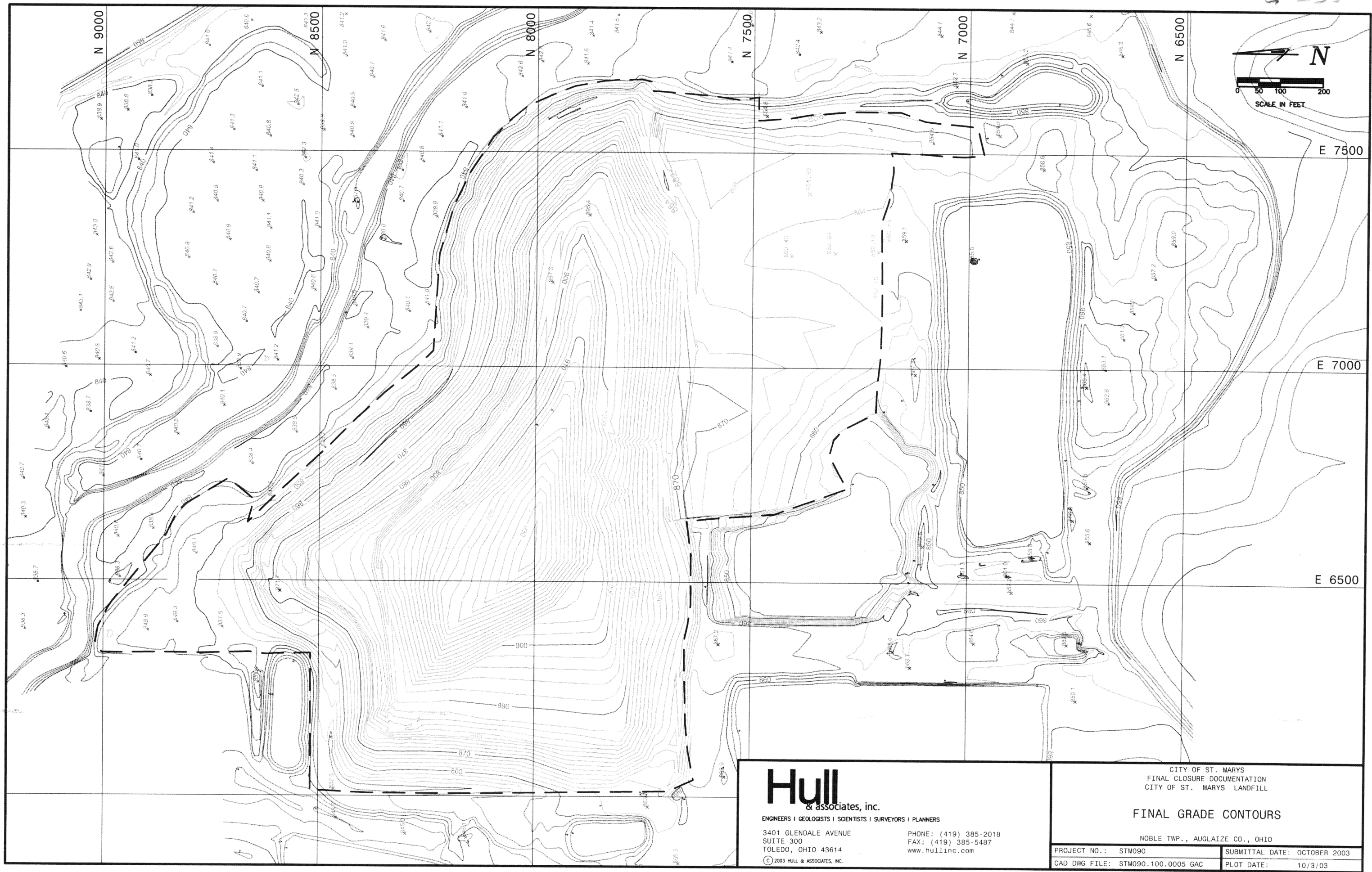
Plat Cabinet C Slides 332-339

C-334



"FIGURE 2"

9-335



"FIGURE 3"