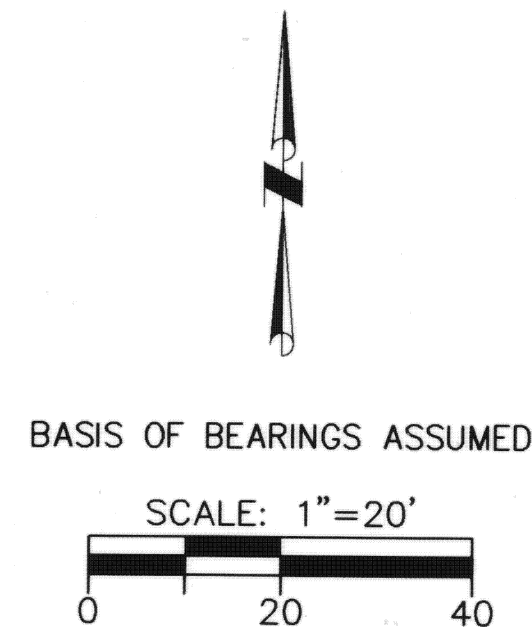
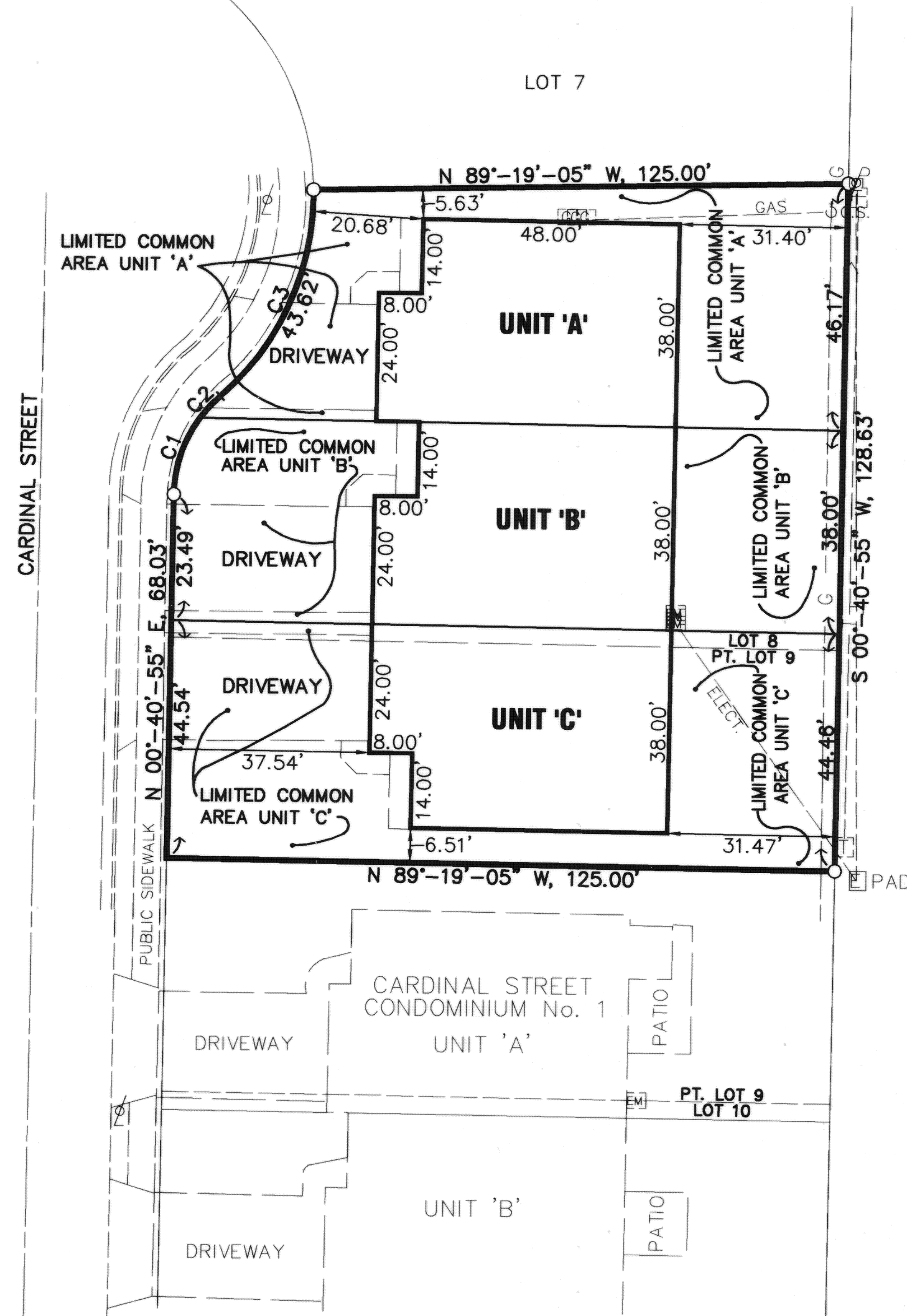


CARDINAL STREET CONDOMINIUM No. 2

BEING SITUATE ON THE WHOLE OF LOT 8 AND THE NORTH PART OF LOT 9 IN DICKE ACRES SUBDIVISION, 1st ADDITION, IN THE VILLAGE OF NEW BREMEN, GERMAN TOWNSHIP, AUGLAIZE COUNTY, OHIO



LEGEND
○ IRON PIN FOUND

ENABLING DECLARATION ESTABLISHING A PLAN FOR CONDOMINIUM OWNERSHIP

RECORDED IN OFFICIAL RECORD VOL. 518, PG. 750

BYLAWS FOR CARDINAL STREET CONDOMINIUM No. 2

RECORDED IN OFFICIAL RECORD VOL. 518, PG. 767

TRANSFERRED AND NUMBERED THIS 17 DAY OF December, 2004

Karen Schumann Jr.
AUGLAIZE COUNTY AUDITOR

FILED THIS 17 DAY OF December, 2004, AT 2:56 O'CLOCK P.M.
RECORDED THIS 17 DAY OF December, 2004
PLAT CABINET C, SLIDE 394

Ann Billings
AUGLAIZE COUNTY RECORDER

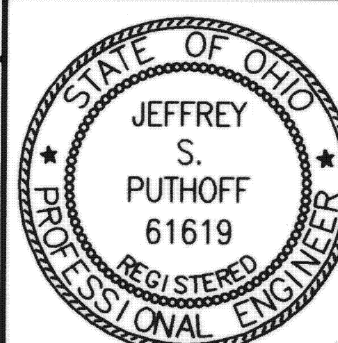
CURVE TABLE					
CURVE NUMBER	RADIUS	△	ARC LENGTH	CHORD LENGTH	CHORD BEARING
1	25.00'	35°-28'-40"	15.48'	15.23'	N 18°-25'-15" E
2	25.00'	12°-42'-55"	5.55'	5.54'	N 42°-31'-03" E
3	50.00'	49°-59'-10"	43.62'	42.25'	N 23°-52'-56" E

ENGINEER'S CERTIFICATION

THE DIMENSIONS SHOWN ON THE STRUCTURE ARE FOR THE FINISHED EXTERIOR AS CONSTRUCTED UPON LOT 8 & 9 AND ARE ACCURATELY SHOWN HEREON.

Jeffrey S. Puthoff
JEFFREY S. PUTHOFF, P.E. #61619

12/17/04
DATE

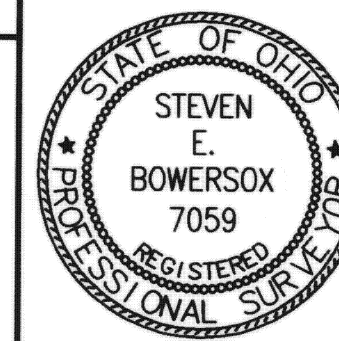


SURVEYOR'S CERTIFICATION

THE DIMENSIONS SHOWN ON THE STRUCTURE ARE FOR THE FINISHED EXTERIOR AS CONSTRUCTED UPON LOT 8 & 9 AND ARE ACCURATELY SHOWN HEREON.

Steven E. Bowersox
STEVEN E. BOWERSOX, P.S. #7059

12-17-2004
DATE



CHOICE ONE ENGINEERING
The choice that exceeds...

440 E. HOEWISHER ROAD
SIDNEY, OHIO 45365
(937) 497-0200 • FAX (937) 497-0300
www.choiceoneengineering.com

date:
12-17-2004

drawn by:
seb

job number:
AUGNBE0402