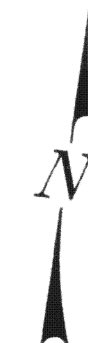
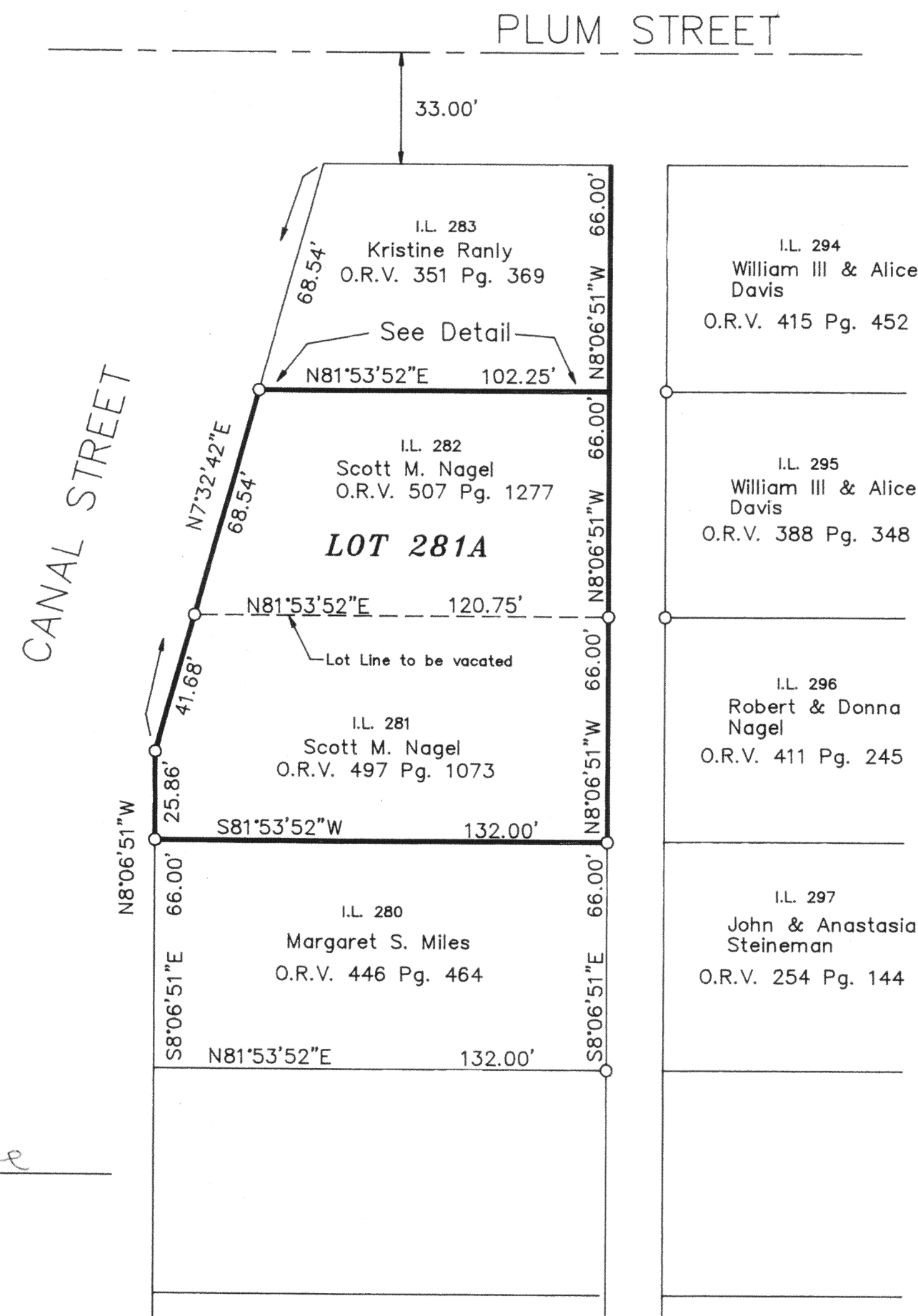
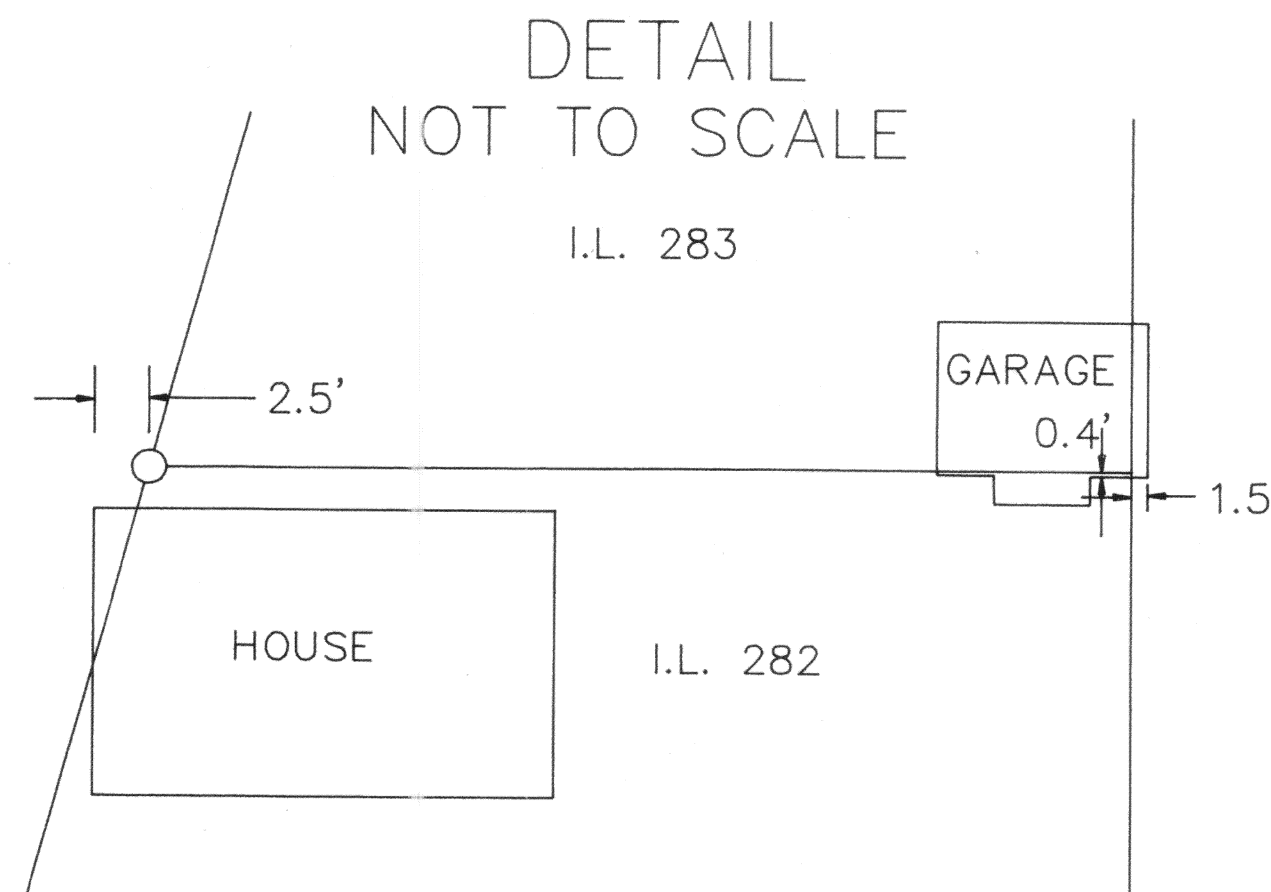


LOT No. 281A

BEING A REPLAT OF LOTS 281 & 282  
VILLAGE OF NEW BREMEN,  
GERMAN TOWNSHIP, AUGLAIZE COUNTY, OHIO  
SOUTH ADDITION OF THE TOWN OF BREMEN  
AS RECORDED IN MERCER COUNTY DEED BOOK E, PAGES 544 & 545

200500004878  
Filed for Record in  
AUGLAIZE COUNTY, OHIO  
ANN BILLINGS  
06-29-2005 At 01:52 PM.  
PLAT 43.20

Cab D Slide 24



SCALE: 1" = 40'

0 20 40 60 80

BASIS OF BEARING IS THE EAST LINE OF INLOTS 280, 281, 282  
BEING N 8°06'51"W AS SHOWN ON THE PLAT OF INLOTS 280, 281,  
282, & 295 BY WORL & ASSOCIATES DATED JULY 1989

### LEGEND

- MONUMENT BOX
- MAG NAIL SET
- ⊗ MAG NAIL OR PK NAIL FOUND
- ⊗ R.R. SPIKE FOUND
- REBAR FOUND
- 5/8" X 30" REBAR SET W/ CAP STAMPED "LJBILL PS 7557"

### NEW BREMEN VILLAGE ADMINSTRATOR

THIS PLAT WAS INSPECTED AND APPROVED BY US THIS 28 DAY  
OF June, 2005

Larry J. Bill  
ADMINISTRATOR

### NEW BREMEN PLANNING COMMISSION

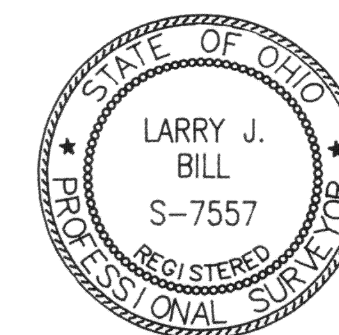
THIS PLAT WAS INSPECTED AND APPROVED BY US THIS 29<sup>th</sup> DAY  
OF June, 2005.

William R. Wente  
CHAIRPERSON

### NEW BREMEN COUNCIL

THIS PLAT WAS INSPECTED AND APPROVED BY US THIS 29<sup>th</sup> DAY  
OF June, 2005.

Larry J. Bill  
MAYOR



PLAT OF SURVEY FOR SCOTT M. NAGEL

**Larry J. Bill**  
Professional Surveyor  
9826 New Harrison-Bradford Road  
Bradford, Ohio 45308  
Phone (937) 448-6320  
e-mail larrybill@bright.net

Larry J. Bill  
LARRY J. BILL, P.S. #7557  
May 13, 2004  
DATE