

REPLAT OF LOTS 39, 40 AND 41, PARK PLACE SUBDIVISION, PHASE FOUR
AND LOT 42, PARK PLACE SUBDIVISION, PHASE THREE

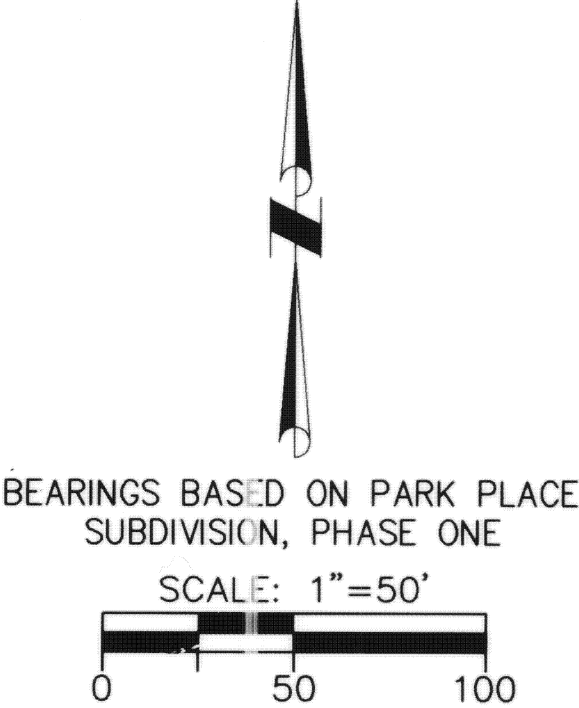
SEC. 35, T 7 S, R 4 E, VILLAGE OF MINSTER, JACKSON TWP., AUGLAIZE CO., OHIO

TRANSFERRED AND NUMBERED THIS 19 DAY OF July, 2005

#5396
AUGLAIZE COUNTY AUDITOR

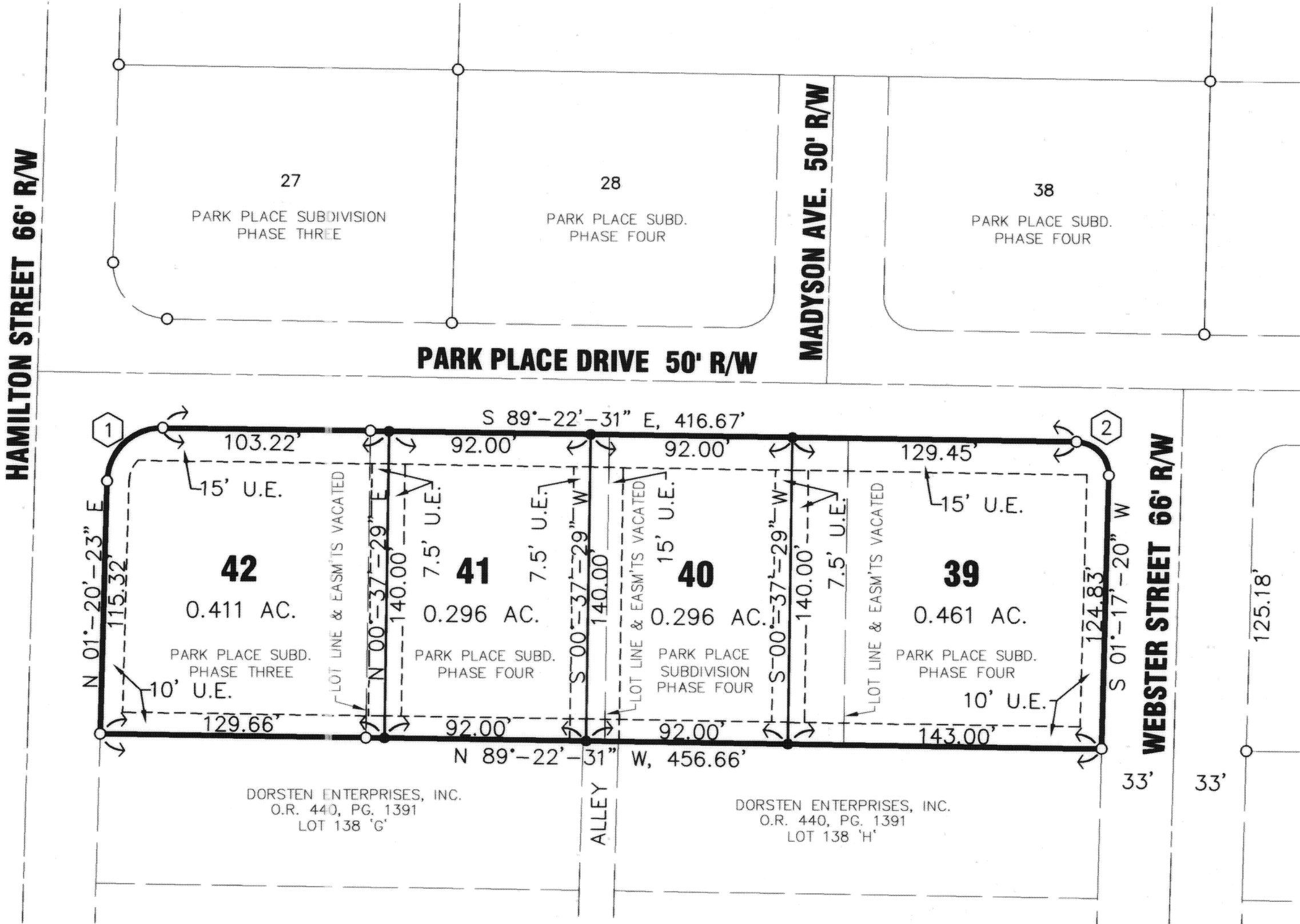
FILED THIS 19 DAY OF July, 2005 AT 12:40 O'CLOCK P.M.
RECORDED THIS 19 DAY OF July, 2005
PLAT CABINET D, SLIDE 30

AUGLAIZE COUNTY RECORDER



- LEGEND**
- 5/8" X 30" REBAR W/CAP SET
 - IRON PIN FOUND

OWNER: WEIGANDT LAND CO. LTD.
O.R. 413, PAGE 209



PLAT AUTHORIZATION

Richard L. Weigandt, President, and Todd Weigandt, Vice President, of Weigandt Land Company, LTD., the owners of the land included within this plat have caused the area located in the Village of Minster, Ohio encompassed by this plat, to be surveyed, replatted, and known as Replat of Lots 39, 40, and 41, Park Place Subdivision, Phase Four and Lot 42, Park Place Subdivision, Phase Three. Furthermore, Richard L. Weigandt, as President, and Todd Weigandt, as Vice President, for Weigandt Land Company, LTD. dedicate the easements as shown on this plat to the public use forever.

Richard L. Weigandt, President
Weigandt Land Company, LTD.
Todd Weigandt, Vice President
Weigandt Land Company, LTD.

State of Ohio
County of AUGLAIZE

The foregoing instrument was acknowledged before me this 14 day of JULY, 2005, by Richard L. Weigandt, as President, and Todd Weigandt, as Vice President, for Weigandt Land Company LTD.

Notary Public
MARJORIE SCHWIETERMAN
NOTARY PUBLIC - STATE OF OHIO
RECORDED IN MERCER COUNTY
My Commission Expires 4-1-09

COVENANTS AND RESTRICTIONS

THE COVENANTS AND RESTRICTIONS FOR PARK PLACE SUBDIVISION ARE RECORDED IN O.R. VOL. 430, PG. 108

MINSTER PLANNING COMMISSION

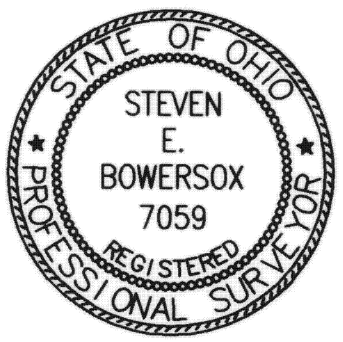
THIS PLAT WAS INSPECTED AND APPROVED BY US THIS 14th DAY OF July, 2005.

CHAIRPERSON

THIS CONVEYANCE HAS BEEN EXAMINED AND THE GRANTOR HAS COMPLIED WITH SECTION 319.202 OF THE REVISED CODE
FEE \$
EXEMPT
KARYN SCHUMANN, COUNTY AUDITOR
Auglaize Co. Auditor

CURVE TABLE					
CURVE NUMBER	RADIUS	Δ	ARC LENGTH	CHORD LENGTH	CHORD BEARING
1	25.00'	89°-17'-06"	38.96'	35.13'	N 45°-58'-56" E
2	15.00'	90°-39'-51"	23.74'	21.34'	S 44°-02'-36" E

STEVEN E. BOWERSOX, P.S. #7059
DATE 07-12-2005



CHOICE ONE ENGINEERING
440 E. HOEWISHER ROAD
SIDNEY, OHIO 45365
(937) 497-0200 • FAX (937) 497-0300
www.choiceoneengineering.com

date: 07-12-2005
drawn by: seb
job number: AugMin0402Fin