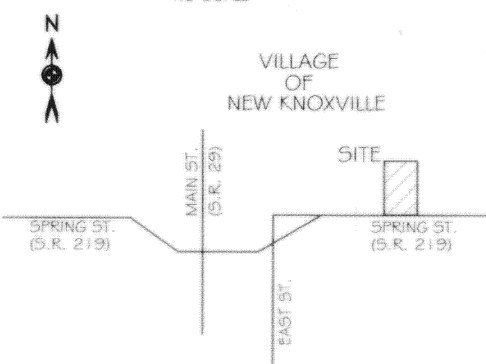


VICINITY MAP NO SCALE



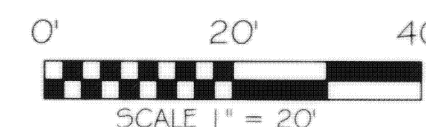
AR-TINN APARTMENTS LLC
OR 533\1718

ARNETT CONDOMINIUM PART OF OUT LOT 59, VILLAGE OF NEW KNOXVILLE S.W. 1/4 SEC. 20, T 6S, R 5E WASHINGTON TWP., AUGLAIZE COUNTY, OH

200700002857
Filed for Record in
AUGLAIZE COUNTY, OHIO
ANN BILLINGS
05-07-2007 At 01:18 PM.
PLAT 129.60

cab D Slide 135-
137

RECEIVED
MAY 07 2007
JANET SCHULER
Auglaize Co. Auditor



BASIS OF BEARING IS BASED ON SURVEY "O-774" FILED IN
THE AUGLAIZE COUNTY TAX MAP OFFICE.

LEGEND

- O 5/8" IRON PIN (FOUND)
- ⊗ RAILROAD SPIKE (FOUND)
- ⊕ MAG NAIL (FOUND)
- ⊕ CONCRETE RW MONUMENT
- ▨ LIMITED COMMON ELEMENT

NOTE:
ALL DIMENSIONS TO OUTSIDE EDGE OF BRICK.

THIS IS TO CERTIFY THAT DRAWING CONSISTING OF THE SHEETS NUMBERED 1 THRU
2 SHOWN THE BUILDINGS MADE DURING inspection on 8/15/06 AND THAT
THE DRAWINGS ACCURATELY SHOW THE BUILDING OR BUILDINGS AND IMPROVEMENTS
AS CONSTRUCTED AND THE LOCATION OF IMPROVEMENTS AND RECORDED EASEMENTS.

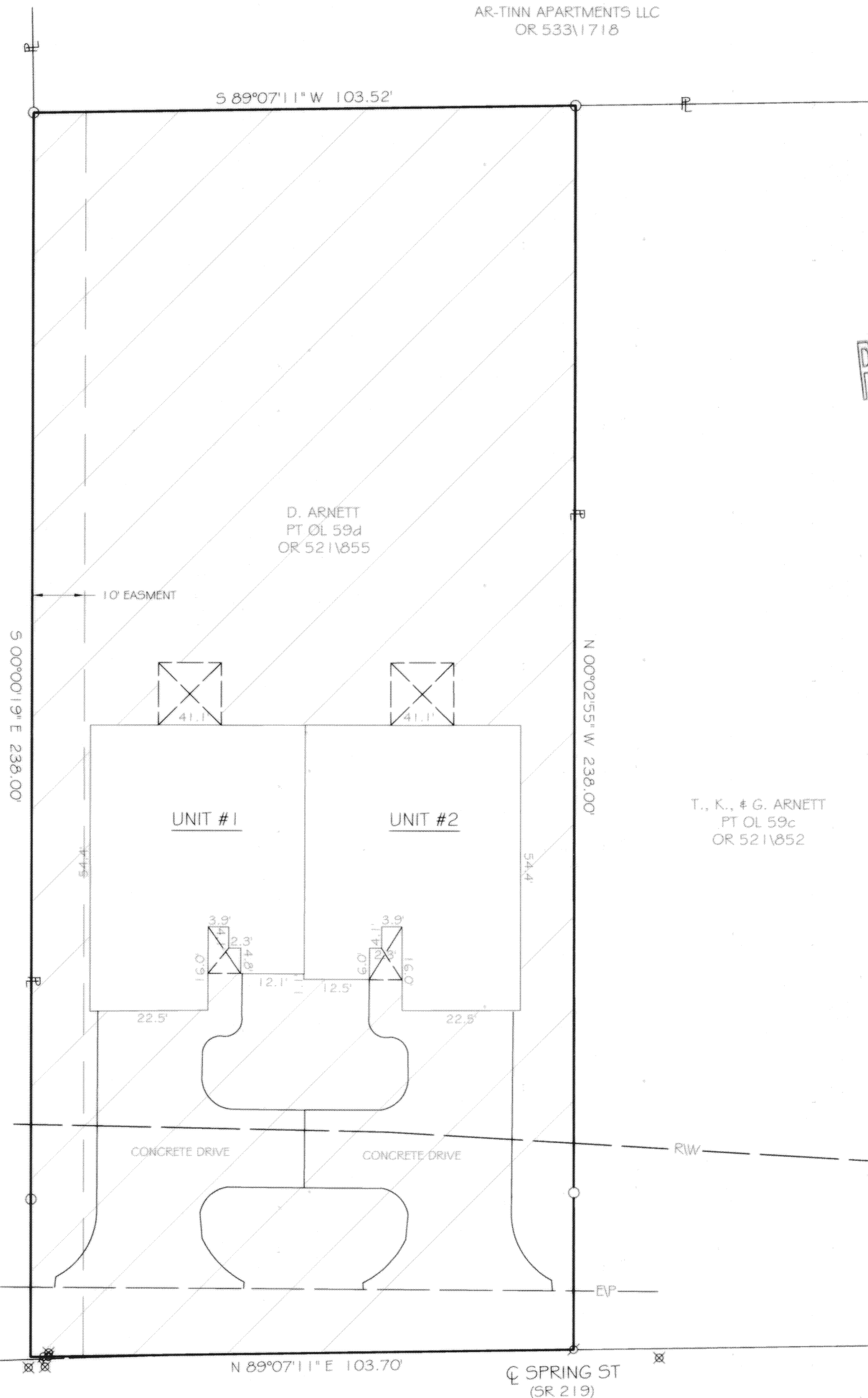
ENABLING DECLARATION ESTABLISHING A PLAN FOR CONDOMINIUM OWNERSHIP
RECORDED IN OR VOLUME 553, PAGE 2534

BYLAWS OF ARNETT CONDOMINIUM ARE RECORDED IN OR VOLUME 553, PAGE 2551.

J. LAMMERS
PT OL 58b
OR 528\2607

D. ARNETT
PT OL 59d
OR 521\855

T., K., & G. ARNETT
PT OL 59c
OR 521\852



P. Yingling
PATRICK R. YINGLING P.E. #68770

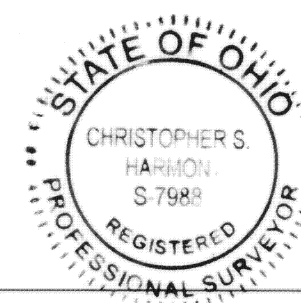
08-22-06
DATE



THE DIMENSIONS SHOWN ON THE UNITS ARE FOR THE FINISHED EXTERIOR AS CONSTRUCTED AND ARE
ACCURATELY SHOWN HEREON.

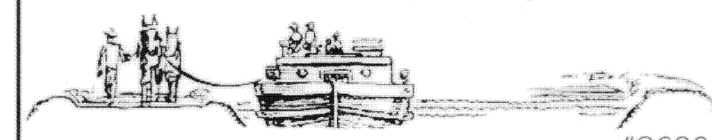
Christopher S. Harmon
CHRISTOPHER S. HARMON P.S. #7988

THE DIMENSIONS SHOWN ON THE UNITS ARE FOR THE FINISHED EXTERIOR AS CONSTRUCTED AND ARE
ACCURATELY SHOWN HEREON.



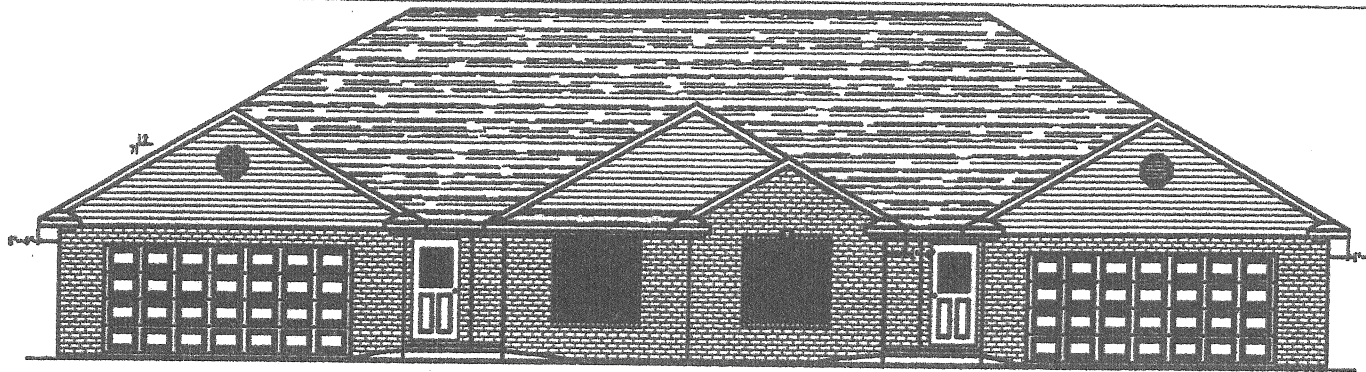
8/15/06
DATE

LOCK-TWO SURVEYING
5166 LOCK TWO RD, NEW BREMEN, OH
419-753-3332

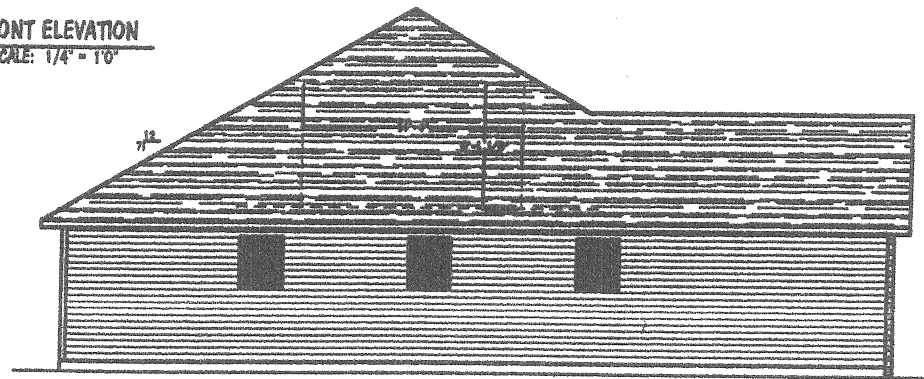


#06026

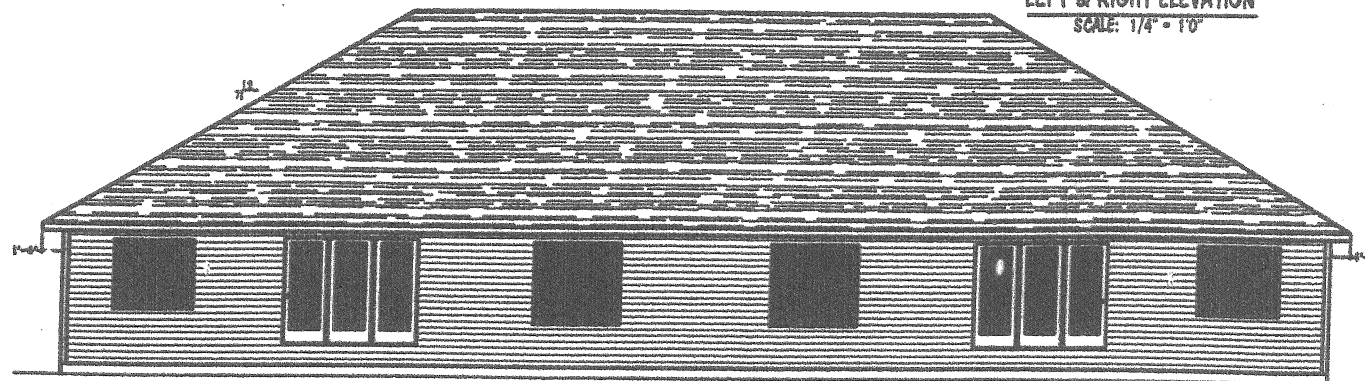
Sheet 1



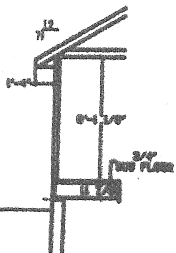
FRONT ELEVATION
SCALE: 1/4" = 1'-0"



LEFT & RIGHT ELEVATION
SCALE: 1/4" = 1'-0"



REAR ELEVATION
SCALE: 1/4" = 1'-0"



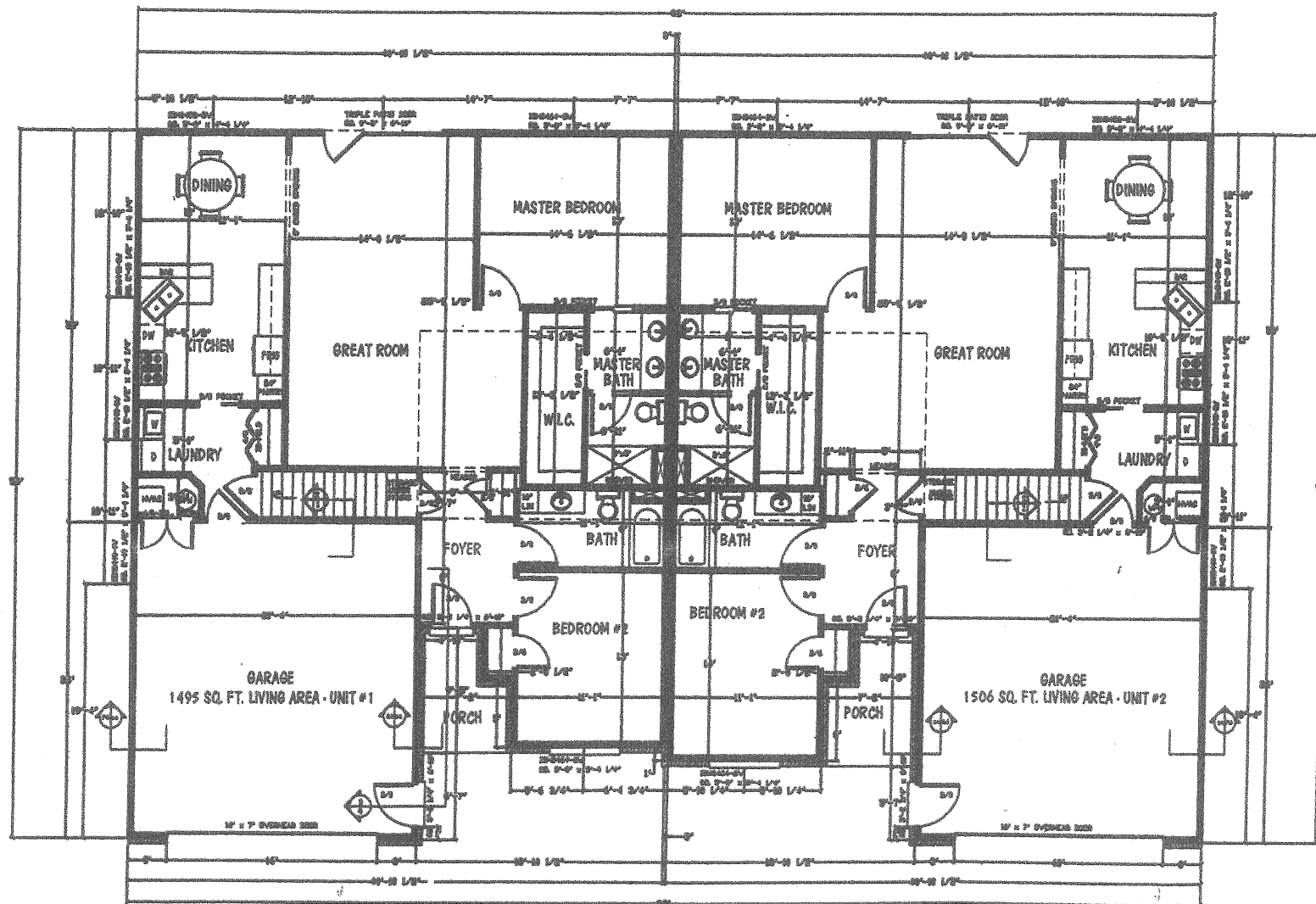
REVISIONS
* 07/04/05 BY
* 08/15/05 BY

THIS HOME PROJECT DESIGNED EXCLUSIVELY FOR:
TROY ARNETT
2005 DIRM FY

HOGUE LUMBER COMPANY
NEW KNOXVILLE, OHIO 45871
PH (615) 783-2263



Date: 04/10/05
Scale: 1/4" = 1'-0"
Drawn By: H
Asst. Eng. Mr.
Project Manager
1
OF 3



FLOOR PLAN

SCALE: 1/4" = 1'-0"

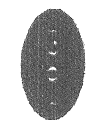
1495 SQ. FT. LIVING AREA - UNIT #1
1506 SQ. FT. LIVING AREA - UNIT #2

10 YEARS
BEFORE YOU SEE
CALL TOLL FREE 800-358-6764

REVISIONS
07/04/03 BE
08/15/03 BE

THIS HOME PLANET DRAWING EXCLUSIVELY FOR:
TROY ARNETT
ARAC PLUM CO.

HOGUE LUMBER COMPANY
NEW KNOXVILLE, OHIO 45871
PH (419) 753-2283



Scale 04/03/03
Scale 1/4" = 1'-0"
Drawn By: M
Arch. Sup. By: M
Project Manager: M

2
OF 3