

WALNUT PLACE CONDOMINIUM

BEING A CONDOMINIUM OF LOT 1 AND LOT 2 OF WALNUT STREET SUBDIVISION
IN THE VILLAGE OF NEW BREMEN, AUGLAIZE COUNTY, OHIO

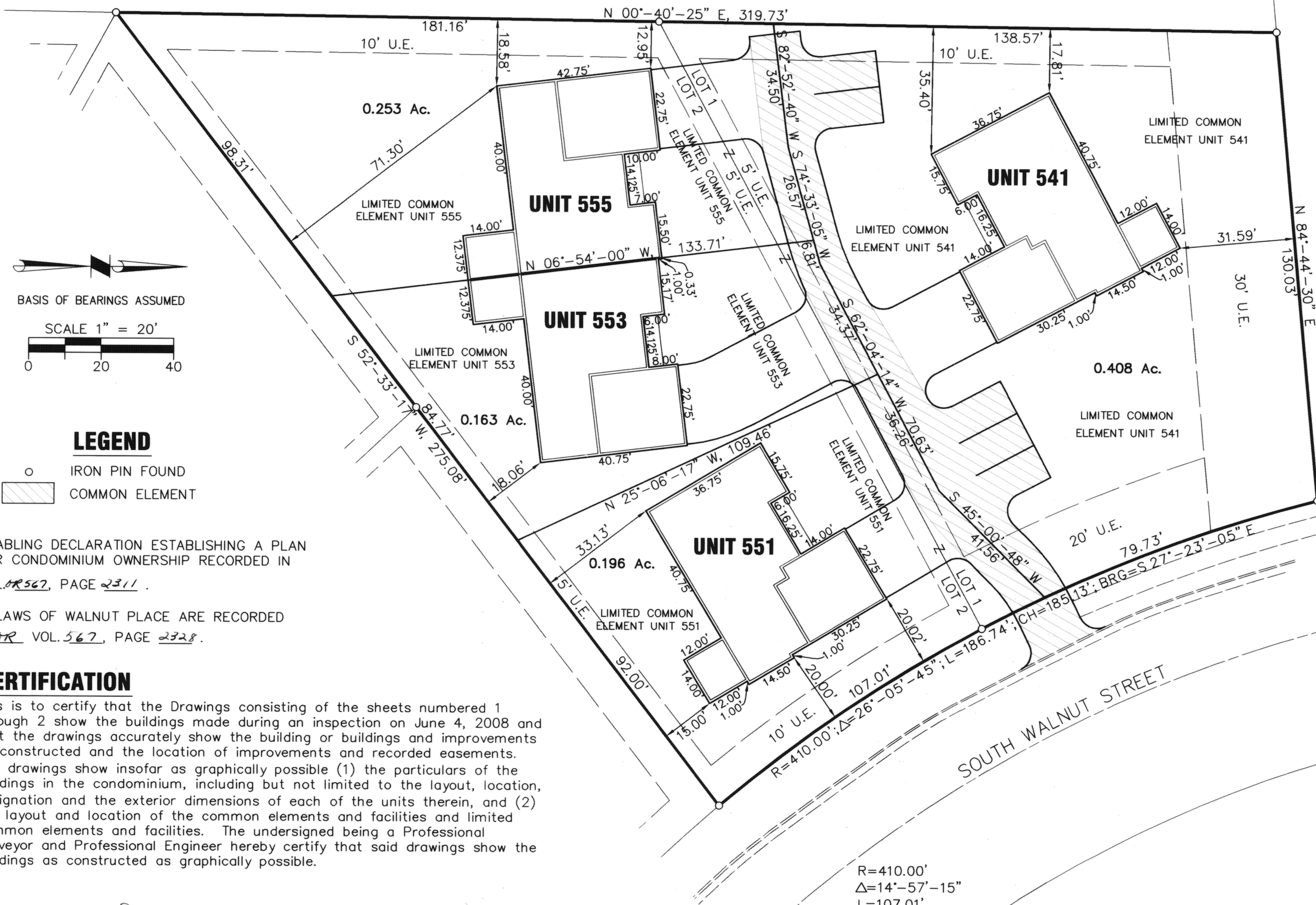
TRANSFERRED AND NUMBERED THIS 6 DAY OF June, 2008

#3879

Janet Schuler gk
AUGLAIZE COUNTY AUDITOR

FILED THIS 6 DAY OF June, 2008 AT 1:08 O'CLOCK P.M.
RECORDED THIS 6 DAY OF June, 2008
PLAT CABINET D, SLIDE 187

Don Bellin
AUGLAIZE COUNTY RECORDER

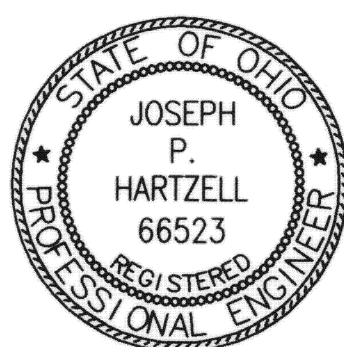


ENABLING DECLARATION ESTABLISHING A PLAN
FOR CONDOMINIUM OWNERSHIP RECORDED IN
VOL. OR 567, PAGE 2311.

BYLAWS OF WALNUT PLACE ARE RECORDED
IN OR VOL. 567, PAGE 2328.

CERTIFICATION

This is to certify that the Drawings consisting of the sheets numbered 1 through 2 show the buildings made during an inspection on June 4, 2008 and that the drawings accurately show the building or buildings and improvements as constructed and the location of improvements and recorded easements. The drawings show insofar as graphically possible (1) the particulars of the buildings in the condominium, including but not limited to the layout, location, designation and the exterior dimensions of each of the units therein, and (2) the layout and location of the common elements and facilities and limited common elements and facilities. The undersigned being a Professional Surveyor and Professional Engineer hereby certify that said drawings show the buildings as constructed as graphically possible.

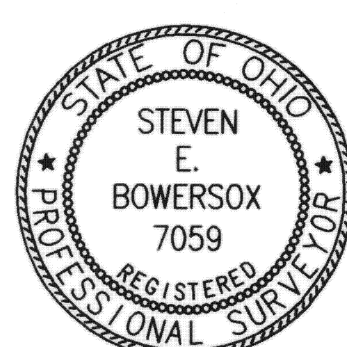


St E Bowersox
STEVEN E. BOWERSOX, P.S. #7059

6/04/2008
DATE

Joe P. Hartzell
JOSEPH P. HARTZELL, P.E. #66523

6-4-08
DATE



R=410.00'
Δ=14°-57'-15"
L=107.01'
CH=106.71'
BRG=S 32°-57'-20" E

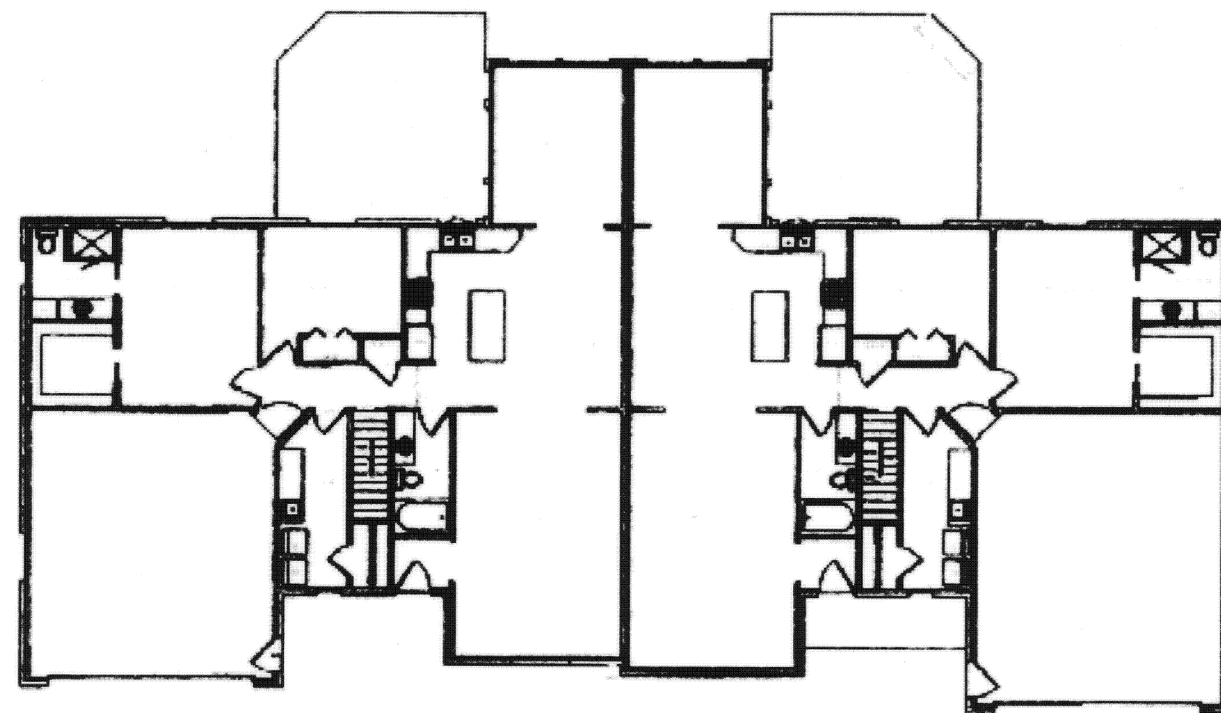
R=410.00'
Δ=11°-08'-30"
L=79.73'
CH=79.60'
BRG=S 19°-54'-27" E

CHOICE ONE ENGINEERING 440 E. HOEWISHER ROAD, SIDNEY, OHIO 45365 (937) 497-0200 FAX (937) 497-0300 www.choiceoneengineering.com	DATE: 06-04-2008
	DRAWN BY: seb
	JOB NUMBER: AUGNBRO802
	SHEET NUMBER 1 OF 2

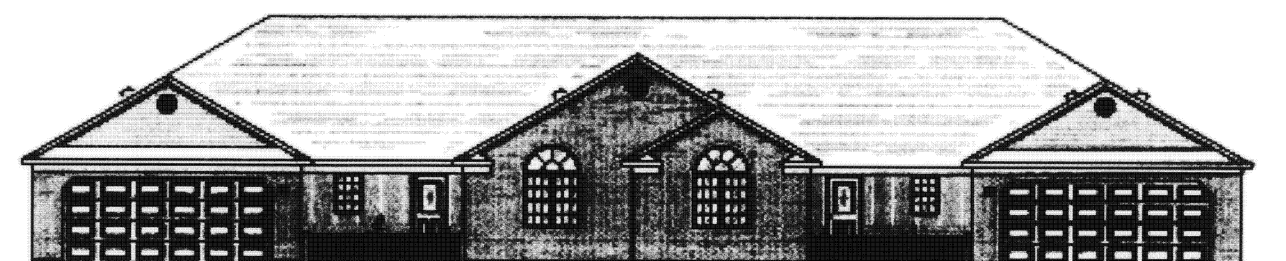
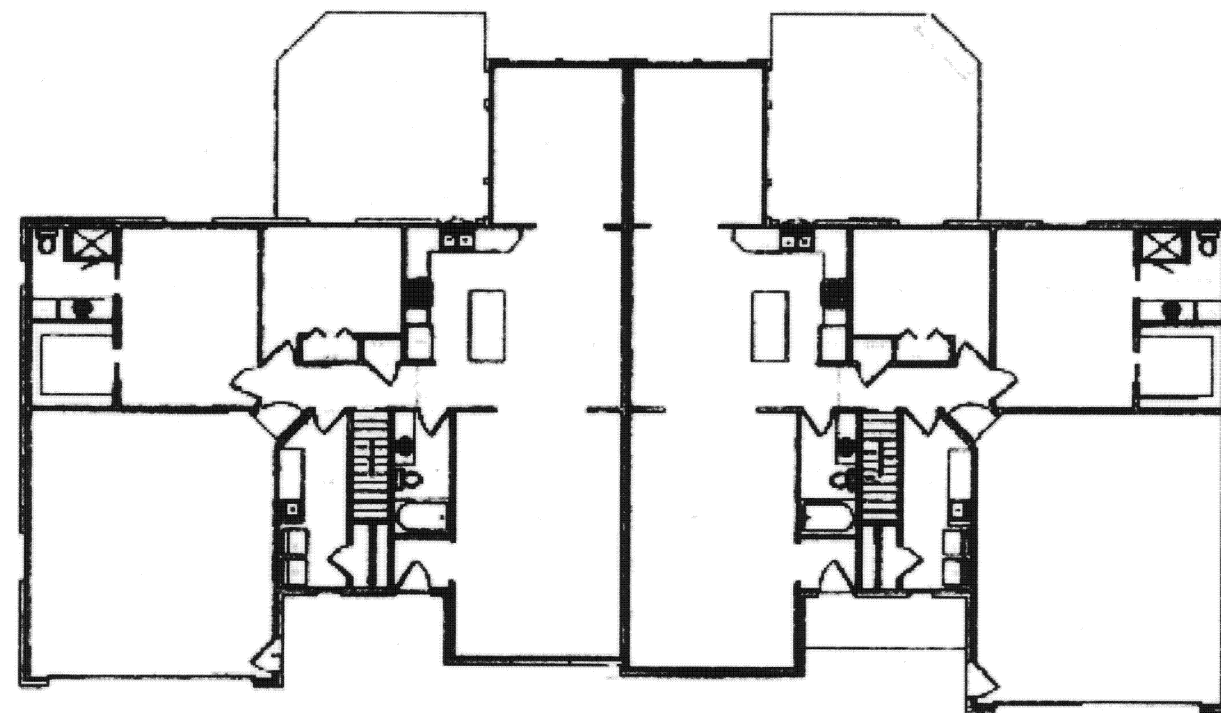
WALNUT PLACE CONDOMINIUM

BEING A CONDOMINIUM OF LOT 1 AND LOT 2 OF WALNUT STREET SUBDIVISION
IN THE VILLAGE OF NEW BREMEN, AUGLAIZE COUNTY, OHIO

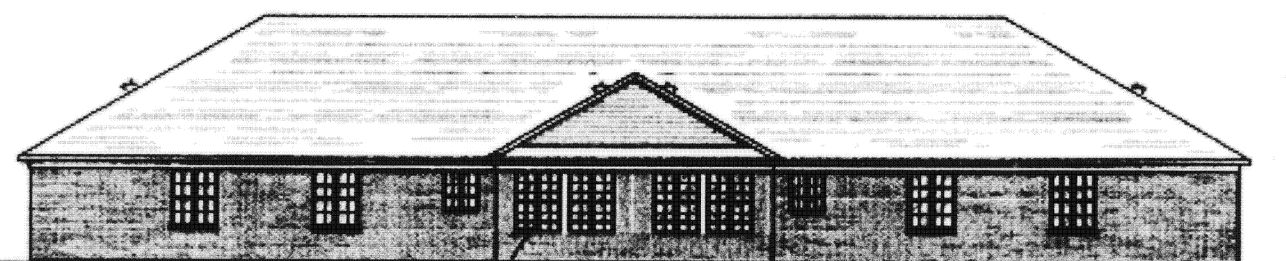
UNIT 553



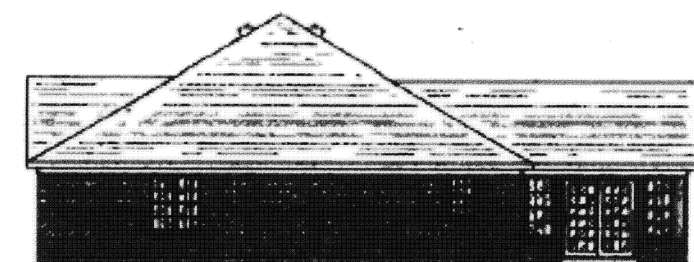
UNIT 555



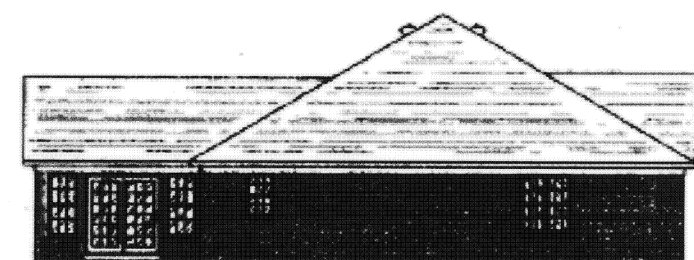
Front Elevation



Rear Elevation

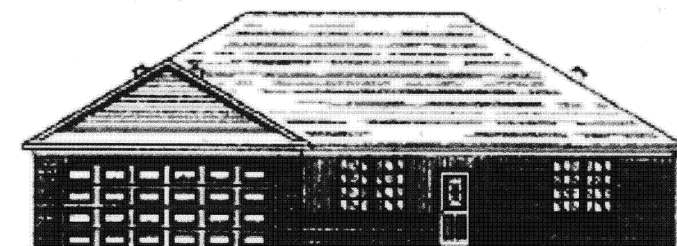
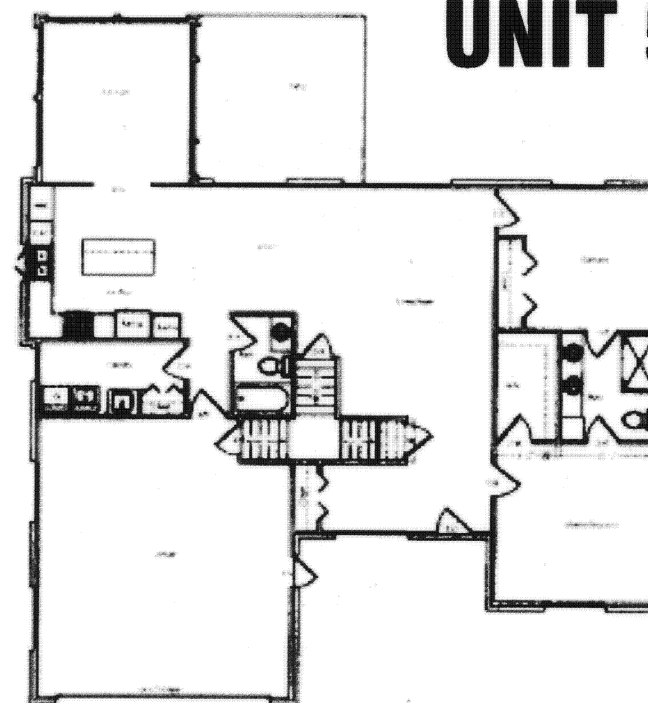


Right Elevation

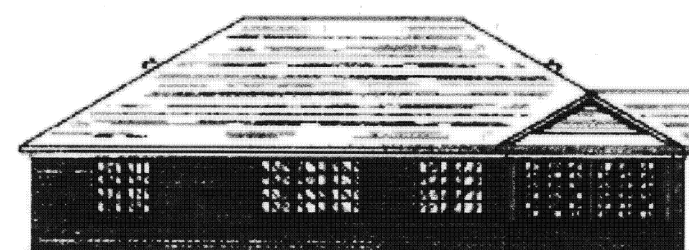


Left Elevation

UNIT 551



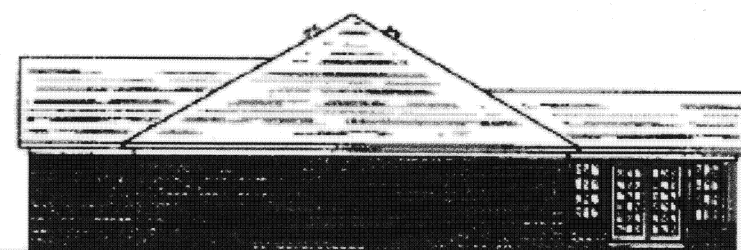
Front Elevation



Rear Elevation

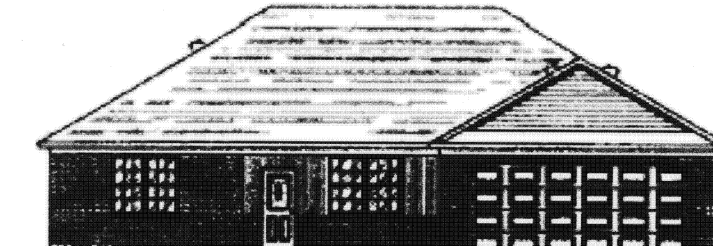
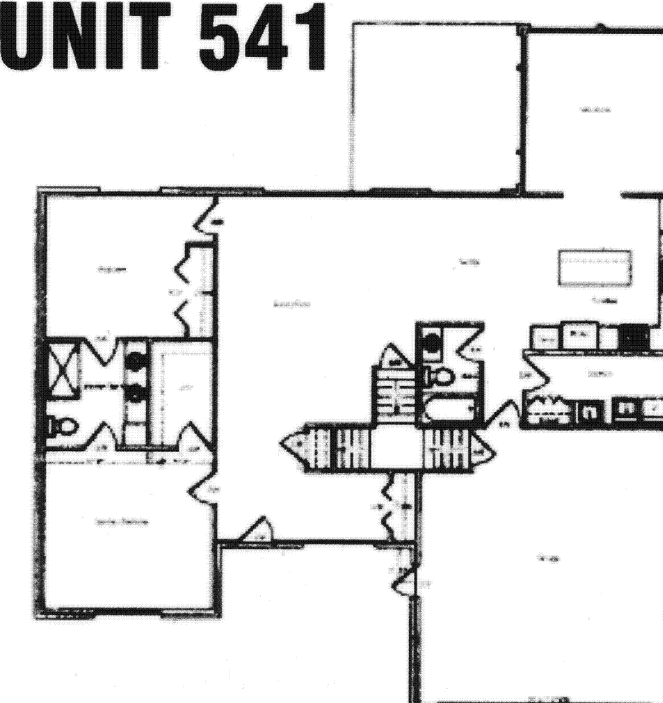


Left Elevation

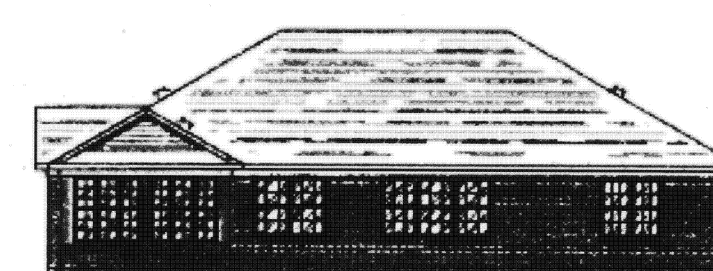


Right Elevation

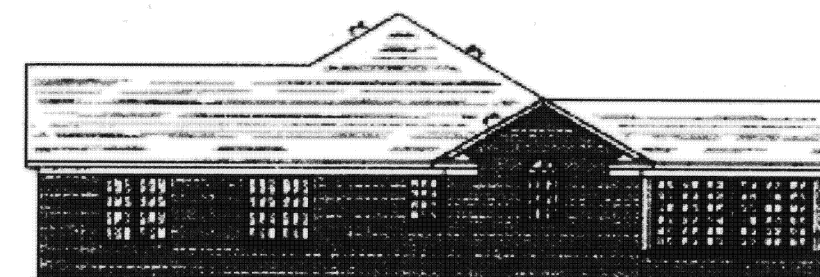
UNIT 541



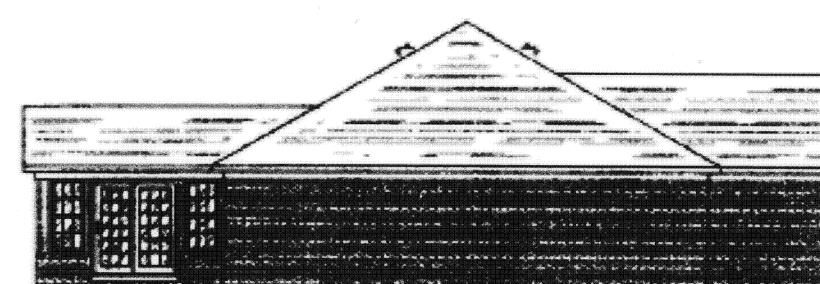
Front Elevation



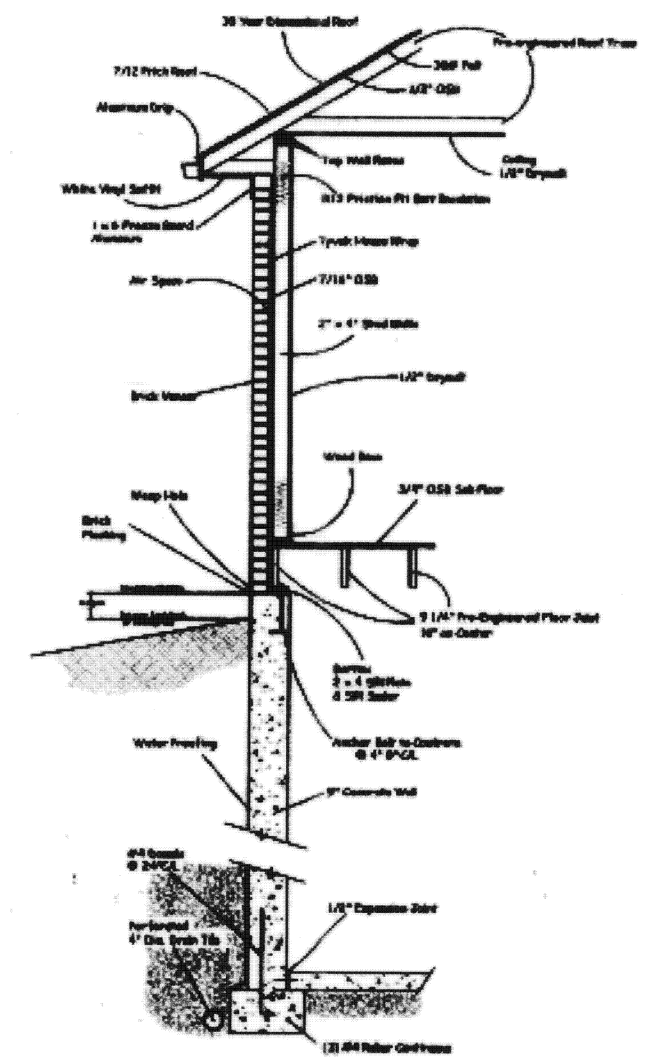
Rear Elevation



Right Elevation

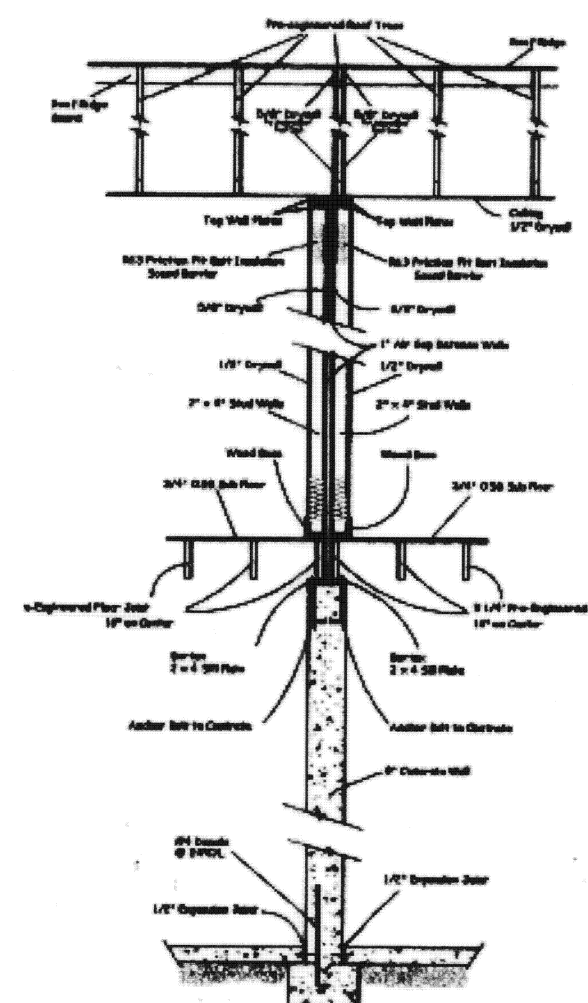


Left Elevation



Section A - A

TYPICAL ALL UNITS



Section B - B

UNITS 553 & 555

CHOICE ONE ENGINEERING	DATE:	06-04-2008
	DRAWN BY:	seb
	JOB NUMBER:	AUGNBRO802
	SHEET NUMBER	2 OF 2
	440 E. HOEWISHER ROAD, SIDNEY, OHIO 45365 (937) 497-0200 FAX (937) 497-0300 www.choiceoneengineering.com	