

SUBDIVISION OF PART LOT 4 OF SHOPPES AT ST. MARYS, SECTION 1

3.172 ACRES SITUATED IN THE SOUTH HALF OF SECTION 34,
NOBLE TOWNSHIP, TOWN 5 SOUTH, RANGE 4 EAST,
COUNTY OF AUGLAIZE, CITY OF ST. MARYS, STATE OF OHIO

CURVE TABLE					
CURVE NUMBER	RADIUS	Δ	ARC LENGTH	CHORD LENGTH	CHORD BEARING
C-1	280.00'	13°-56'-24"	68.12'	67.96'	N 30°-31'-20" W
C-2	280.00'	22°-18'-46"	109.04'	108.35'	N 48°-38'-55" W
C-3	280.00'	36°-15'-10"	177.16'	174.22'	N 41°-40'-43" W
C-4	300.00'	10°-10'-31"	53.28'	53.21'	S 31°-44'-19" E

RECEIVED
MAR 21 2012
JANET SCHULER
Auglaize County Auditor

ST. MARYS PLANNING COMMISSION APPROVAL
THE PLANNING COMMISSION FOR THE CITY OF ST. MARYS, OHIO, DOES HEREBY CERTIFY THAT THE ATTACHED PLAT FOR THE LAND ENCOMPASSING THE AREA TO BE KNOWN AS REPLAT OF PART LOT 4 OF SHOPPES AT ST. MARYS, SECTION 1, WAS APPROVED BY SAID PLANNING COMMISSION ON THE 20 DAY OF MARCH, 2012

G. Mullen
SECRETARY

AUDITOR'S CERTIFICATE

THIS PLAT WAS INSPECTED AND APPROVED BY US
THIS 21 DAY OF MARCH, 2012

Janet Schuler
JANET SCHULER
AUGLAIZE COUNTY AUDITOR

3-21-12
DATE

RECORDER'S CERTIFICATE

THIS PLAT WAS FILED FOR PERMANENT RECORD IN AUGLAIZE COUNTY RECORDER'S OFFICE ON THIS 21 DAY OF MARCH, 2012 AT 11:28 AM/PM AND IS NOW PERMANENTLY RECORDED IN PLAT CABINET D SLIDE(S) 258 * 1733

Christina L. Lambert
CHRISTINA L. LAMBERT
AUGLAIZE COUNTY RECORDER

3-21-12
DATE

CERTIFICATE OF ACCEPTANCE

ALL REQUIRED IMPROVEMENTS HAVE BEEN INSTALLED AND HAVE BEEN ACCEPTED BY THE DIRECTOR OF PUBLIC SERVICE AND SAFETY.

G. Mullen
DIRECTOR OF PUBLIC SERVICE AND SAFETY

3-20-12
DATE

PLAT AUTHORIZATION AND DEDICATION

Shoppes at St. Marys, Ltd., an Ohio limited liability company, the owner of the land included within this plat have caused the area located in the City of St. Marys, Ohio, encompassed by this plat, to be surveyed, platted, and known as Replat of Part Lot 4 of Shoppes at St. Marys, Section 1. Furthermore, Shoppes at St. Marys, Ltd., an Ohio limited liability company, dedicates the easements as shown on this plat to the public use forever.

By: *George R. Oberer, Jr.*
George R. Oberer, Jr.
Its: Manager

By: *Mike Christie, Jr.*
U.S. Bank - Lienholder

By: *Mike Christie, Jr.*
Mike G. Christie, Jr.
Its: Vice-President

State of OHIO
County of MONTGOMERY

The foregoing instrument was acknowledged before me this 14 day of MARCH, 2012, by George R. Oberer, Jr., Manager, on behalf of the company.



ANITA R. TATARSKY, Notary Public
In and for the State of Ohio
My Commission Expires May 19, 2015

Anita R. Tatarsky
Notary Public

May 19 2015
My commission expires

State of OHIO
County of Franklin

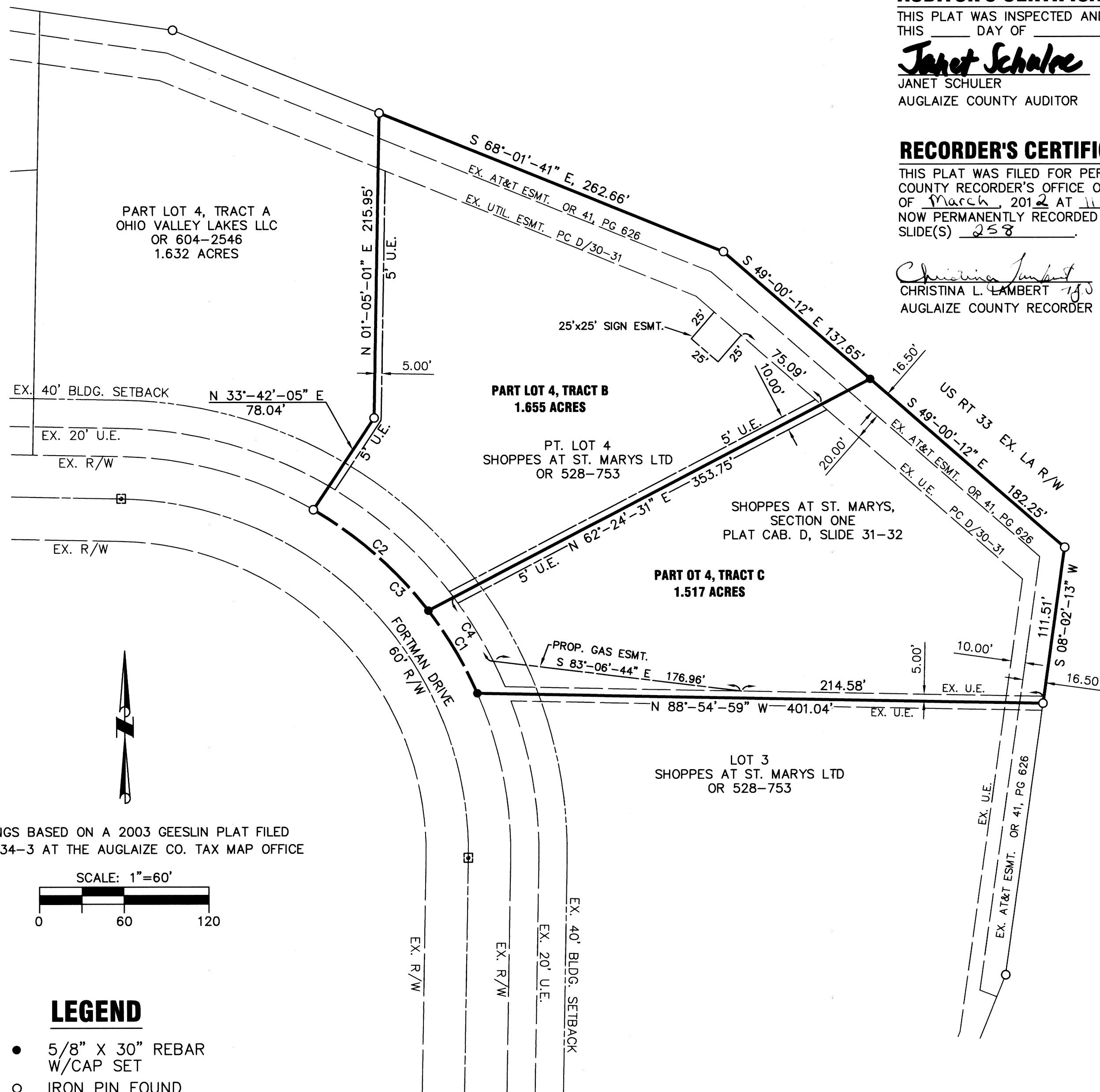
The foregoing instrument was acknowledged before me this 15 day of MARCH, 2012, by Mike G. Christie, Jr., Vice-President, of U.S. Bank, on behalf of the company.



CYNTHIA A. FELT, Notary Public
My Commission Expires 06-04-2012

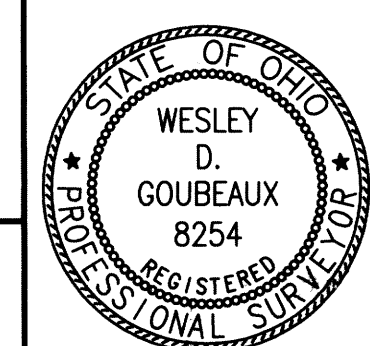
Cynthia A. Felt
Notary Public

5-4-2013
My commission expires



Wesley D. Goubeaux
WESLEY D. GOUBEAUX, P.S. #8254

03-13-2012
DATE



CHOICE ONE ENGINEERING
440 E. HOEWISHER ROAD
SIDNEY, OHIO 45365
(937) 497-0200
203 W. LOVELAND AVENUE
LOVELAND, OHIO 45140
(513) 239-8554
www.choiceoneengineering.com

DATE:
03-13-2012
DRAWN BY:
WDG
JOB NUMBER:
AUGSMA1202
SHEET NUMBER
1 OF 1