

INDUSTRIAL PARK SOUTH

SEC. 34, T 7 S, R 4 E, VILLAGE OF MINSTER,
JACKSON TWP., AUGLAIZE CO., OHIO

TRANSFERRED AND NUMBERED THIS 18 DAY OF September, 2017.

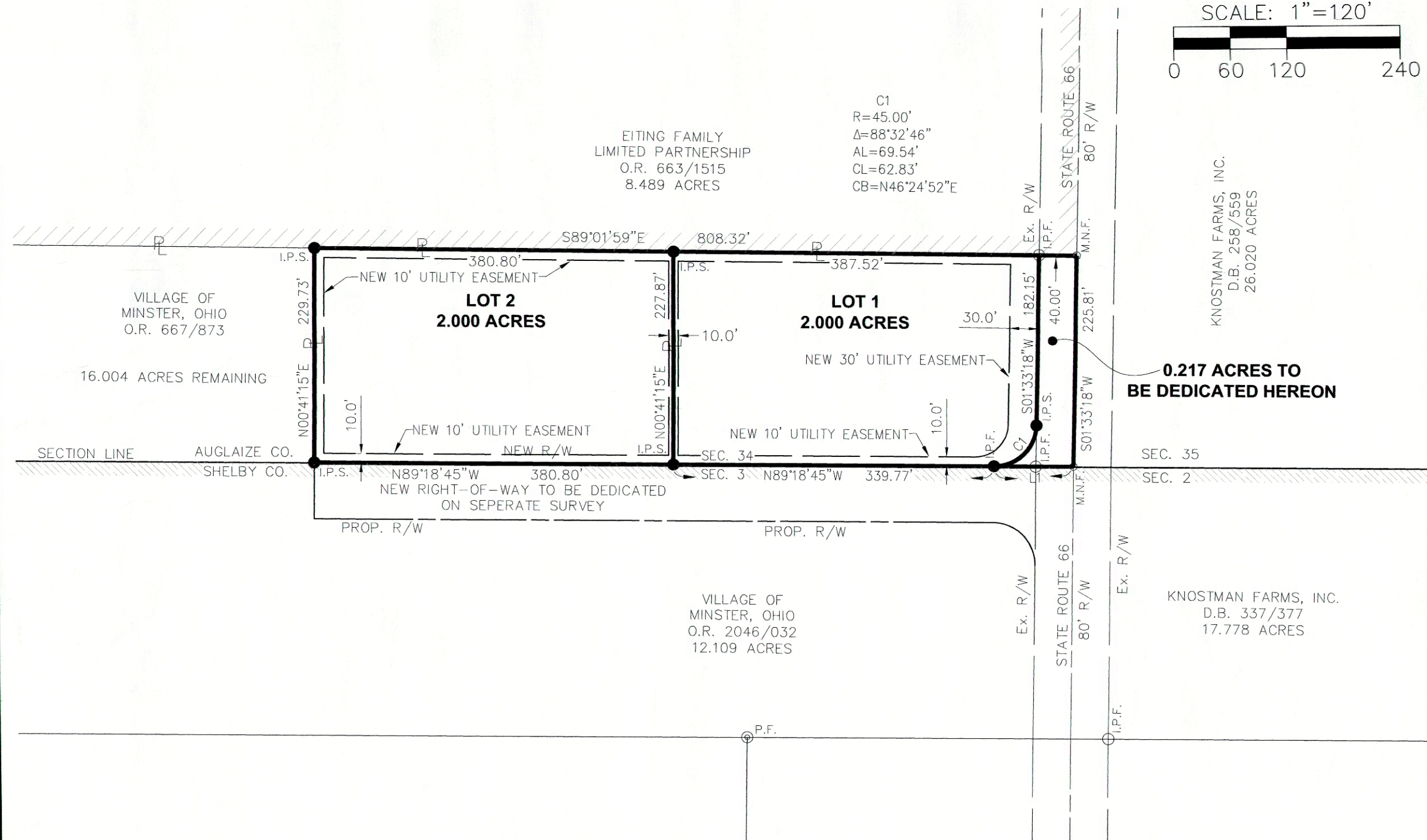
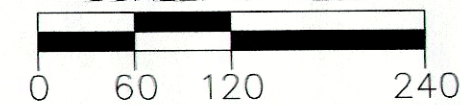
Janet Schuler
AUGLAIZE COUNTY AUDITOR

FILED THIS 18th DAY OF September, 2017 AT 9:58 O'CLOCK A.M.
RECORDED THIS 18th DAY OF September, 2017.
PLAT CABINET D, SLIDE 330.

Christina Lambert
AUGLAIZE COUNTY RECORDER

THE BEARINGS ARE BASED ON
NAD 83 CORS 2011 ADJUSTMENT,
OHIO NORTH ZONE,
ODOT VRS CORS NETWORK

SCALE: 1"=120'



PLAT AUTHORIZATION AND DEDICATION

THE VILLAGE OF MINSTER, THE OWNERS OF THE LAND INCLUDED WITHIN THIS PLAT HAVE CAUSED THE AREA LOCATED IN THE VILLAGE OF MINSTER, OHIO ENCOMPASSED BY THIS PLAT, TO BE SURVEYED, PLATTED, AND KNOWN AS INDUSTRIAL PARK SOUTH. FURTHERMORE, THE VILLAGE OF MINSTER, DEDICATE THE STREETS AND EASEMENTS AS SHOWN ON THIS PLAT TO THE PUBLIC USE FOREVER.

Dennis Kitzmiller
AUTHORIZED SIGNATURE

Mayor
TITLE

STATE OF OHIO
COUNTY OF Auglaize

THE FOREGOING INSTRUMENT WAS ACKNOWLEDGED BEFORE ME THIS 13th DAY OF September, 2017, BY THE VILLAGE OF MINSTER.

Julie A. Schneider
NOTARY PUBLIC
JULIE A. SCHNEIDER
NOTARY PUBLIC - STATE OF OHIO
Recorded in Auglaize County
My commission expires May 2, 2021

201700004865
Filed for Record in
AUGLAIZE COUNTY, OHIO
CHRISTINA LAMBERT, RECORDER
09-18-2017 At 09:58 am.
PLAT 43.20

VILLAGE OF MINSTER VILLAGE COUNCIL

THIS PLAT WAS INSPECTED AND ACCEPTED BY US THIS 13th DAY OF September, 2017.

John Steuchschulte
CLERK

Dennis Kitzmiller
MAYOR

VILLAGE OF MINSTER PLANNING COMMISSION

THIS PLAT WAS INSPECTED AND APPROVED BY US THIS 13th DAY OF September, 2017.

Dennis Kitzmiller
CHAIRPERSON

VILLAGE OF MINSTER ADMINISTRATOR

THIS PLAT WAS INSPECTED AND APPROVED BY ME THIS 11th DAY OF September, 2017.

Donald W. Howard
VILLAGE OF MINSTER ADMINISTRATOR

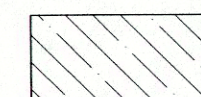
AUGLAIZE COUNTY ENGINEER

THIS PLAT WAS APPROVED FOR RECORDING BY
ME THIS _____ DAY OF _____, 20____.

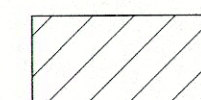
AUGLAIZE COUNTY ENGINEER

LEGEND

- I.P.S. 5/8" X 30" REBAR W/CAP SET
- I.P.F. IRON PIN FOUND
- M.N.F. MAG NAIL FOUND
- ⊙ P.F. IRON PIPE FOUND



COUNTY LINE

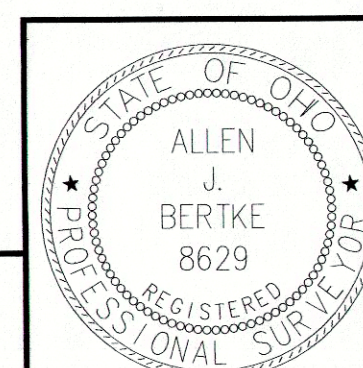


CORPORATION LIMITS

LINE CHART		
LINE	BEARING	DIST.
L1	N89°18'45"W	84.33'

Allen J. Bertke
ALLEN J. BERTKE, P.S. #8629

9-11-17
DATE



ChoiceOne
Engineering

SIDNEY, OHIO 937.497.0200
LOVELAND, OHIO 513.239.8554
PORTLAND, INDIANA 260.766.2500
www.CHOICEONEENGINEERING.com

DATE:
09-05-2017
DRAWN BY:
RMF
JOB NUMBER:
AUGMIN1704
SHEET NUMBER
1 OF 1