

RECEIVED

MAY 15 2023

LINDA RICE
Auglaize County Auditor

SUNRISE CONDOMINIUM ASSOCIATION

TRANSFERRED AND NUMBERED THIS 15 DAY OF May, 2023

Linda Rice
AUGLAIZE COUNTY AUDITOR

FILED THIS 15 DAY OF May, 2023, AT 11:29 O'CLOCK A.M.
RECORDED THIS 15 DAY OF May, 2023.
PLAT CABINET E, SLIDE 40-41

Emily K. Schlenker
AUGLAIZE COUNTY RECORDER

202300002071
Pages: 2
Filed for Record in Auglaize County, Ohio
Emily K. Schlenker, Recorder
05/15/2023 11:29 AM Recording Fees: \$86.40
PLAT CABINET PLAT E / p40 - p41

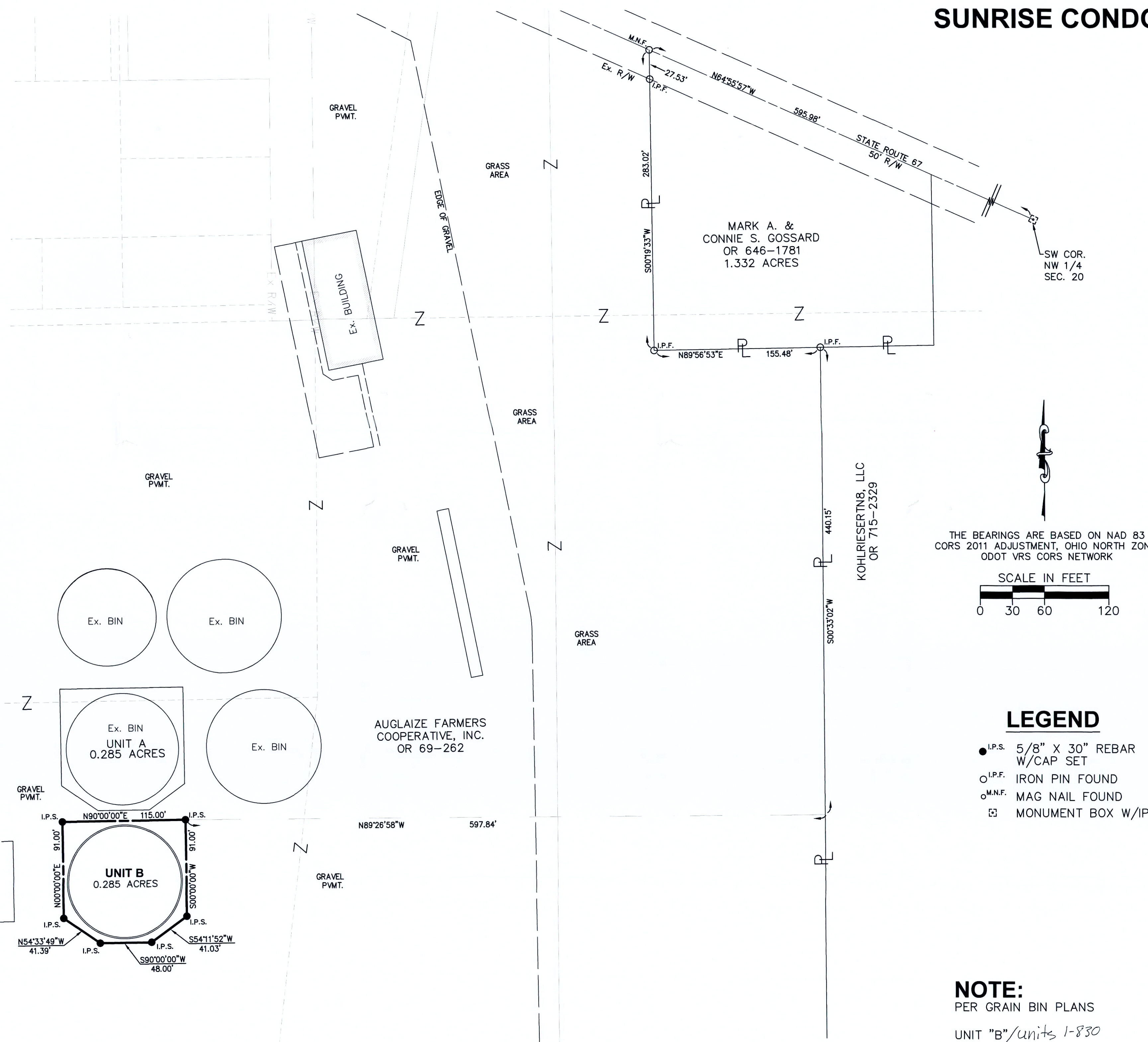
Choice
Engineering

SIDNEY, OHIO 937.497.0000
LOVELAND, OHIO 513.239.8554
WWW.CHOICEENGINEERING.COM

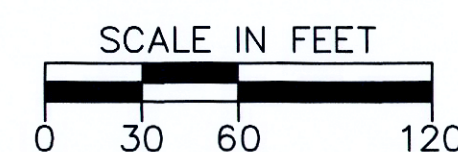
SUNRISE GRAIN BIN
UNION TOWNSHIP, AUGLAIZE COUNTY, OHIO
UNIT B BIN CONDOMINIUM PLAT

REVISIONS:

FILE NAME
AUGUNI2202
DRAWN BY
RMF
CHECKED BY
AUB
PROJECT No.
AUGUNI2202
DATE
09-22-2022
SHEET NUMBER
1 OF 1



THE BEARINGS ARE BASED ON NAD 83
CORS 2011 ADJUSTMENT, OHIO NORTH ZONE,
ODOT VRS CORS NETWORK

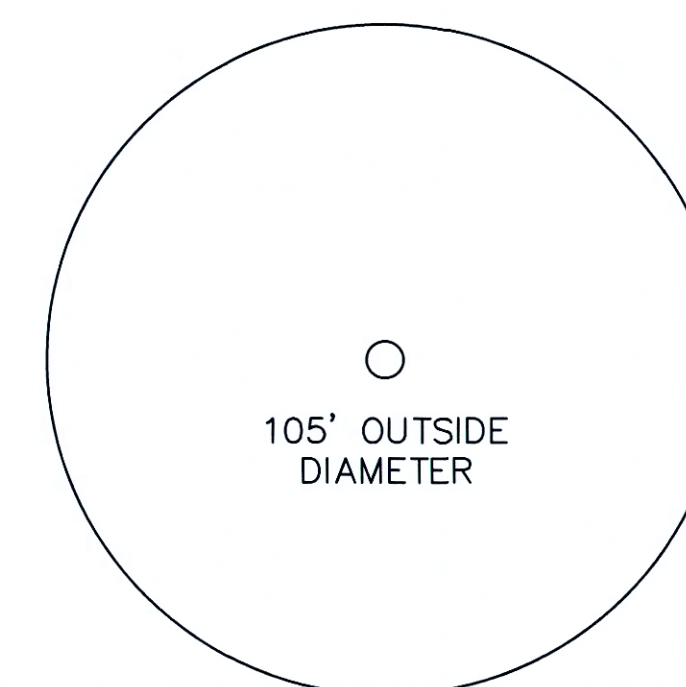


LEGEND

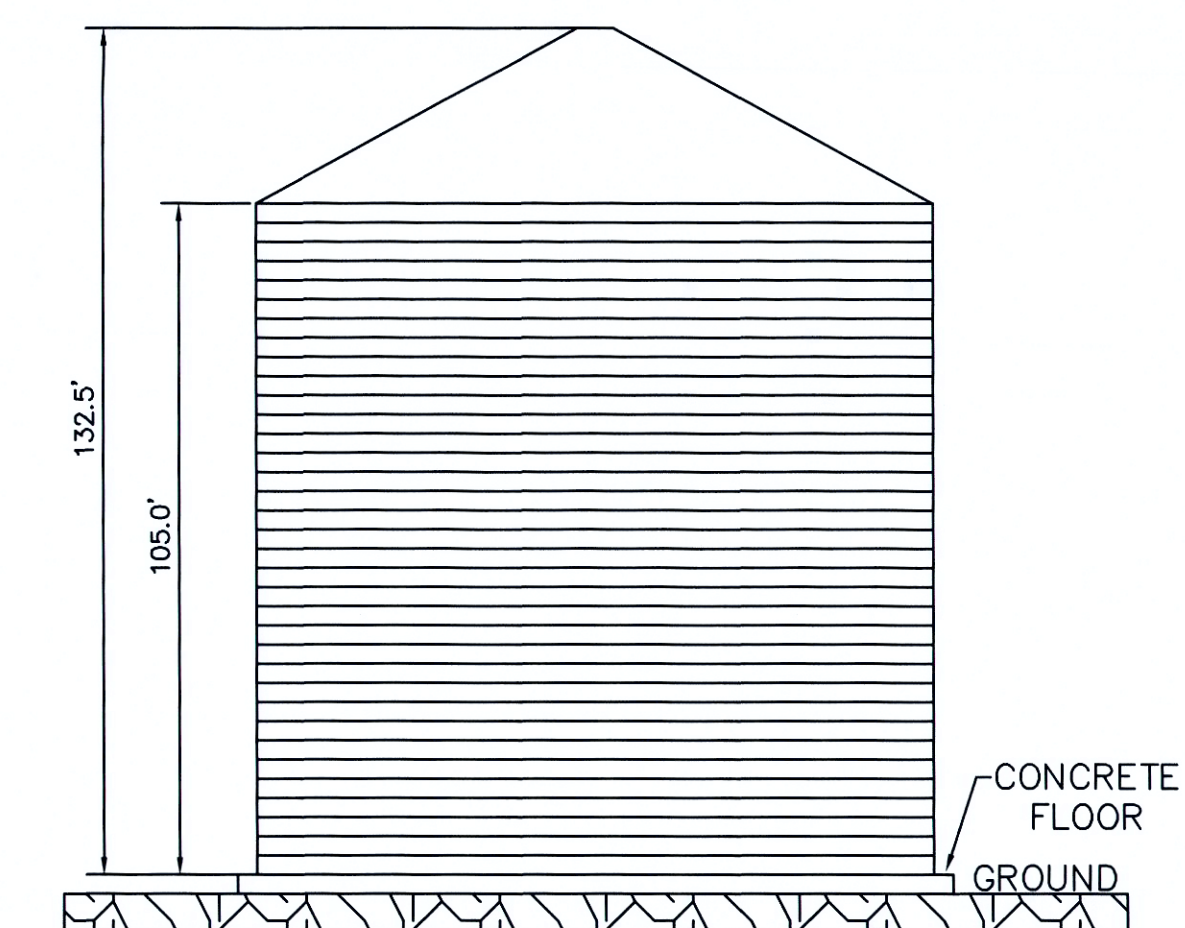
- I.P.S. 5/8" X 30" REBAR W/CAP SET
- I.P.F. IRON PIN FOUND
- M.N.F. MAG NAIL FOUND
- MONUMENT BOX W/IP FOUND

NOTE:

PER GRAIN BIN PLANS
UNIT "B"/units 1-830
INTERIOR WORKING SPACE
DIAMETER= 104.5'
SIDEWALL HEIGHT= 105.0'
DEPTH FOR CAPACITY= 105.0'
PEAK HEIGHT= 132.5'
842,565 BUSHELS TOTAL CAPACITY



PLAN VIEW-UNIT B
SCALE 1"=30'



ELEVATION VIEW-UNIT B
SCALE 1"=30'

SURVEYOR'S STATEMENT

I CERTIFY THAT THIS DRAWING ACCURATELY SHOWS THE SUNRISE CONDOMINIUM AS CONSTRUCTED.

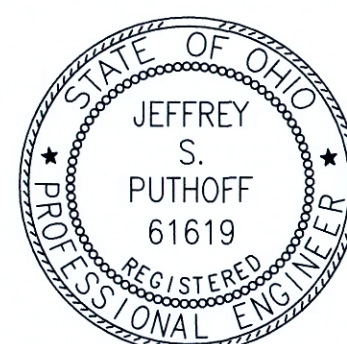
Allen J. Bertke
ALLEN J. BERTKE, PS #8629
DATE 10-4-2022



ENGINEER'S STATEMENT

I CERTIFY THAT THIS DRAWING ACCURATELY SHOWS THE SUNRISE CONDOMINIUM AS CONSTRUCTED.

Jeffrey S. Puthoff
JEFFREY S. PUTHOFF, PE #61619
DATE 10/4/22



ACREAGE SUMMERY

0.285 ACRES UNIT A
0.285 ACRES UNIT B
0.570 ACRES TOTAL